



Accordance
with the
Macintosh Emulator
BasiliskII

Installation & User Manual

For running
Accordance[®] Bible Software Version 9
on a Windows[®] PC

Version 6, © 2011 OakTree Software, Inc.

All rights reserved

Thanks to TorahResource and Tim Hegg for help with the BasiliskII Installers and the documentation.

The Macintosh emulation software contained in the downloaded emulator installer files and on the emulator CD is BasiliskII, which is an open-source, free emulation software obtainable from the Internet (<http://www.students.uni-mainz.de/bauec002/B2Main.html>). We are not selling BasiliskII. We have packaged the emulation software together with these instructions in order to make installation easier, and to aid users of Accordance Bible Software who wish to utilize this superior software tool for biblical and related studies.

If you purchase this package, you receive the Emulator CD bundled for easy installation, and this printed manual. In addition, you are entitled to receive technical support from OakTree Software, Inc. for the installation of the emulator software (BasiliskII). We cannot offer technical support for those who have obtained BasiliskII software from sources other than TorahResource or OakTree Software. If you have difficulty installing the emulation software, please contact us via e-mail: support@accordancebible.com or telephone: 407-339-0266.

Throughout this manual, Windows refers to the registered trademark of Microsoft Windows; Accordance refers to the registered trademark of OakTree Software, Inc.; Macintosh refers to the registered trademark of Apple Macintosh.

Apple Rom Image

In order to run the Macintosh emulator software (BasiliskII), an Apple ROM image must be loaded onto your Windows PC. Apple, like all computer manufacturers, retains ownership of the ROM chip on the motherboard of their computers. When a person buys a computer, the manufacturer gives that person the right to use the ROM chip contained in the computer, but does not give the buyer ownership of that ROM chip. In the strictest technical sense, it is illegal to use the ROM image unless you actually own a Macintosh computer.

Apple no longer manufactures the 68K ROM chip (Motorola 68K series), nor does Apple support any Macintosh computer running the 68K ROM chip. Though Apple would never relinquish ownership of the ROM chips used for their computers (since this would present an unworkable legal precedence), it is clear that Apple is not concerned about the websites which openly offer the 68K ROM images.

The ROM image included in the installer is available elsewhere on the internet. By using the ROM image in the installer, you accept full responsibility for its use. If you are concerned about the strict interpretation of the copyright and/or trademark law and desire to own the physical Apple Macintosh ROM, please contact us.

Note: The images will be seen most clearly at 200% magnification.

Table of Contents

Introduction	5
Installation and Setup	5
A. Installing the Macintosh Emulator	5
To use Basilisksetup.exe:	5
What Files are Installed?	7
Saving this Manual:	7
B. Setting up the Emulator	7
1. Creating Shortcuts	7
2. Configuring the Emulator	7
a. Increase the RAM allocated to the Emulator:	8
b. Create an additional virtual hard drive:	8
c. Set up the External File System:	9
d. Enable the CD-ROM Drive:	9
e. Set the Screen Colors:	9
f. Quit the Preferences.	9
C. Running the emulator for the first time.	10
1. Initializing the New Drive	10
2. Introduction to the Macintosh System.	10
a. The Desktop	10
b. The Application Menu	11
c. Shutting Down	11
d. Emptying the Trash	11
e. The Window	11
f. Launching and Quitting Programs	11
g. Keyboard Commands	12
h. Creating a Desktop Shortcut (Alias)	12
i. The Accordance Demo	12
D. Installing Accordance Software.	12
1. Accordance Supplied .HFV Files.	13
Running the Accordance Installer.	13
2. Installing Accordance Software from Downloads	14
3. Installing from CD-ROMs (Windows XP or Vista 32 bit only)	14
a. Order of the CD-ROMs	14
b. Reading the CD-ROM in the Emulator	15
c. Running the Installer	15
d. Older CD-ROMs.	15
E. Reading the Documentation on Windows	16
1. Accessing the Help Files	16
To Find and Bookmark the Help Files in your Browser:	16
To use the Help files while working with Accordance in the emulator:	17

2. Copying the PDF Files to Windows	17
3. Reading the PDF Files	18
F. Setting up Accordance	18
1. Launching Accordance.	18
a. Make an alias of Accordance for convenient access:	18
b. Run and Register the program:	19
2. Setting Preferences	19
G. Printing	20
To use PrintToPDF:	20
PrintToPDF Fixes	21
Printer Drivers	21
H. Exporting Text	22
To set the export of Greek and Hebrew:	22
To copy and paste into Word:	22
Rich Text Format.	23
To save text in an RTF file and open it in Word:	23
Adjusting the Hebrew Text:	23
J. Troubleshooting Tips	25
Reading CD-ROMs	25
BasiliskII Preferences	25
Windows XP.	25
Windows CD-ROMs are ejected.	25
Macintosh only CD-ROMs	26
Vista Issues	26
Other Issues	26
Error 192 when running an Installer	26
Setting BasiliskII Preferences	27
Downloading Updates.	27
Toggling between Windows and Macintosh	27
Transferring Files between Windows and the Emulator	27
Transferring files from a Macintosh to the Emulator	28
Transferring files from the Emulator to another Accordance.	28
Reinstalling the Emulator	28
Transferring Accordance from one Emulator Installation to Another	29
Enlarging or Deleting a Virtual Hard Drive.	29
NO to Virtual Memory	29
Reducing CPU Power Usage.	29
Screen Problems	30
Installing BAS Pictures	30
Hebrew Word Troubleshooting Tips	30

Introduction

The emulation software, called BasiliskII, creates an environment on your Windows machine that in every way emulates a Macintosh computer (utilizing the Motorola 68K series processor). The Macintosh system installed is 7.5.

After installation and setup, you will have a functioning Macintosh on your Windows PC. Whenever you want to run Macintosh programs on your Windows machine, you will simply launch the emulator as you would any other program (either from the **Start** menu or by double-clicking a shortcut icon on your desktop). Once the emulator is running, you can install, launch, and run any Macintosh program (compiled for the 68K Macintosh).

Remember, the emulator is like any other software you run on your Windows computer. You can have the emulator running as well as other programs. Of course, the amount of RAM you have determines how many programs can effectively be running at any given time. You can use the **<Alt+Tab>** key combination to cycle between the active programs. You can also transfer text and files between the two systems.

Updates to this manual, and helpful hints on the use of Accordance on the emulator are available at:

www.accordancebible.com/support/emulator.php

Installation and Setup

In order to get Accordance running satisfactorily on your PC you must do the following:

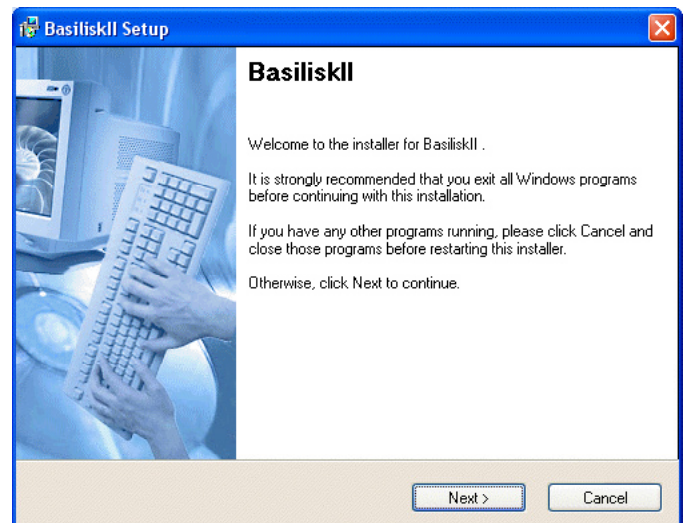
- A. Install the BasiliskII emulator.
- B. Configure the emulator using the program called BasiliskIIGui.
- C. Run the emulator.
- D. Install the Accordance program and modules on the Macintosh system.
- E. Set up Accordance and its Preferences
- F. Open the Help and Documentation on the Windows side. .

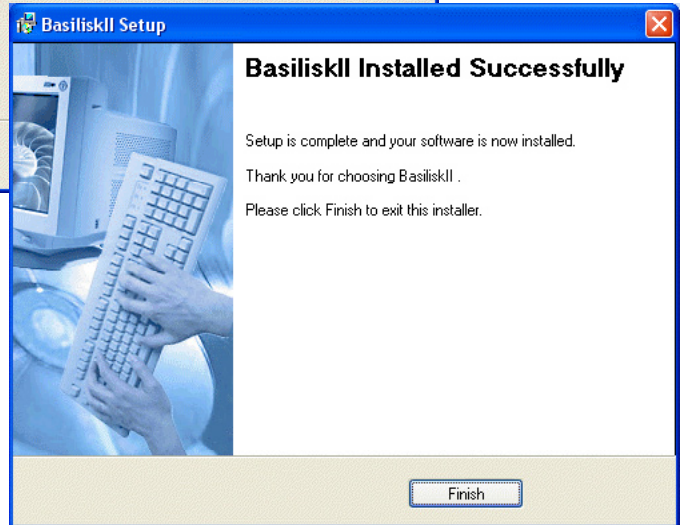
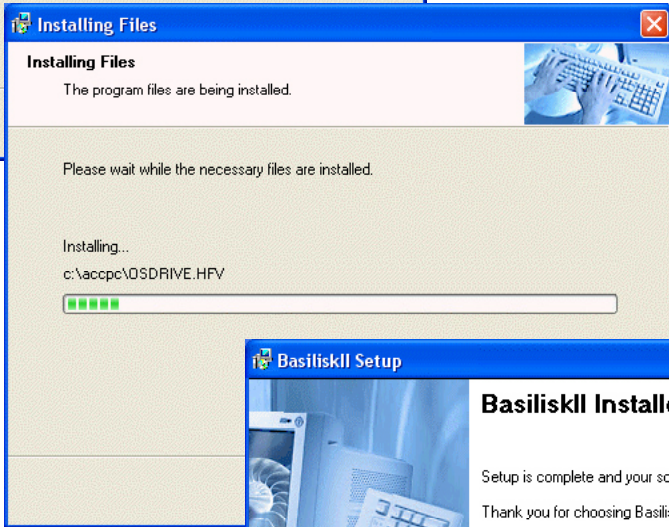
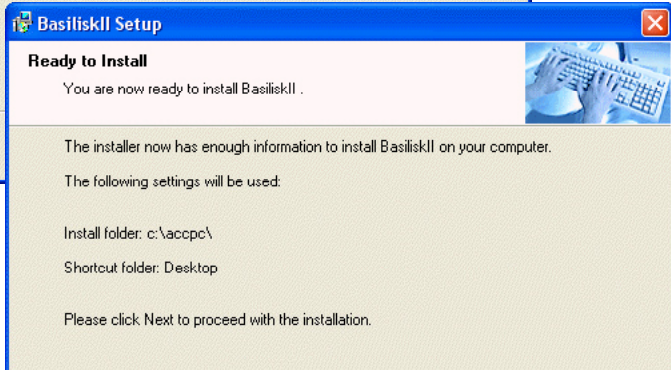
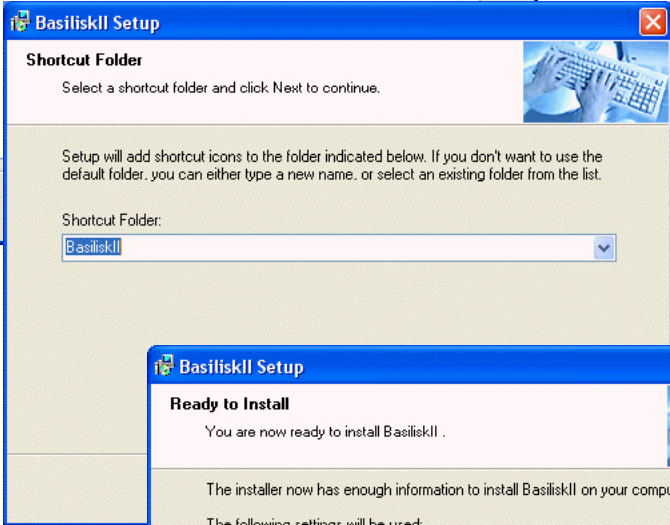
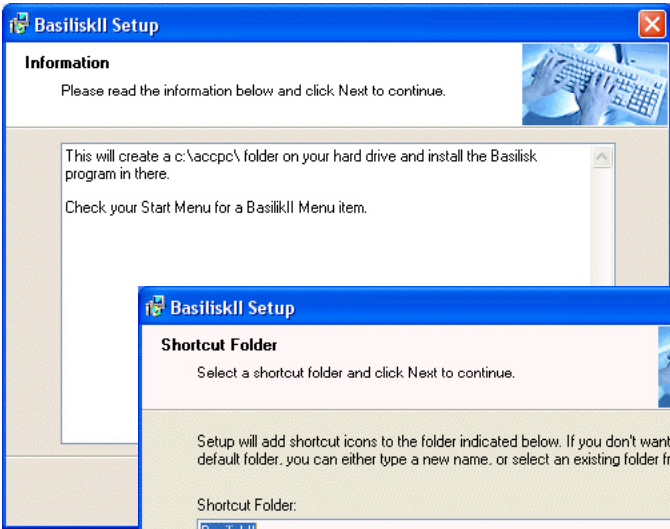
A. Installing the Macintosh Emulator

The installer supplied by download or on a disk will install all the files needed to run BasiliskII on your PC.

To use Basilisksetup.exe:

1. If you have **Windows 7, Vista, Windows XP or 2000**, double-click on **basilisksetup.exe**.
2. You do not need to change the location of the installation shortcut, just click **Next** on each screen until the installer finishes.
3. Click on **Finish**, save this Manual to your hard drive, and go on to **Step B**.





What Files are Installed?

In **C: accpc** you will find this set of files. There is no need to do anything with any of them except as specified below.

Saving this Manual:

Copy this Emulator Manual to a convenient location on your computer.

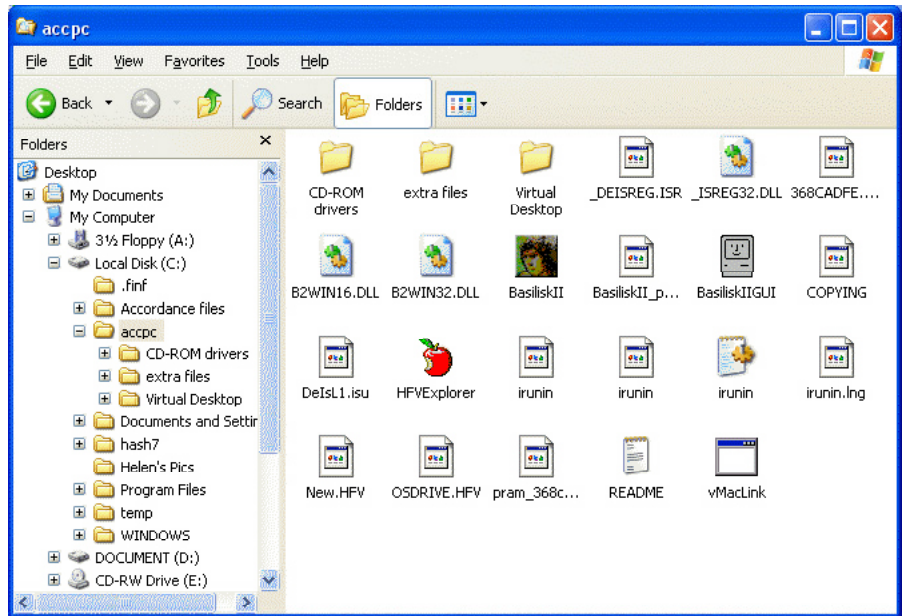
We recommend creating a new folder on the **C:** drive and naming it **Accordance files**. You will copy and save various files to this location, including this manual.

To create a new folder:

1. Navigate to the **C:** drive in **My Computer** and select **New Folder** from the **File** menu.
2. Enter the name of the folder on the label in place of **untitled**.

To copy files in Windows:

1. Right-click on the file you wish to copy, then choose **Copy** from the drop-down menu.
2. Navigate to the location to which you want to copy the file.
3. Right-click and choose **Paste** from the drop-down menu.

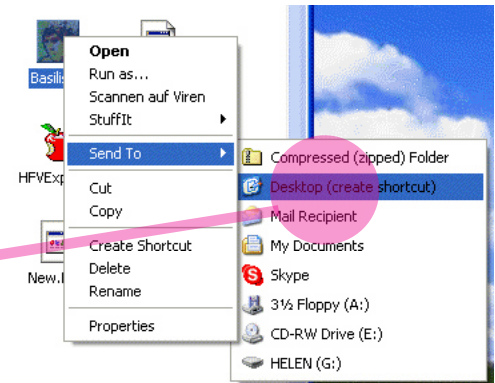


B. Setting up the Emulator

1. Creating Shortcuts

You may want to create “shortcuts” to two program files: the emulator itself (file name: **BasiliskII.exe**) and possibly the BasiliskII Preferences program (file name: **BasiliskIIGUI.exe**). Both of these programs will be found in the **accpc** folder on your **C:** drive.

1. Right-click on the file and choose **Send to: Desktop**. This will add a shortcut icon to the Desktop.
2. If you wish you can drag this shortcut icon to the **Windows Task Bar**, **Start** button or **Startup folder**. Whenever you want to access these programs, simply double-click the shortcut icon.



2. Configuring the Emulator

You need to take several important steps to prepare the emulator for the installation of Accordance:

Launch the BasiliskII Preferences program by double-clicking the shortcut or the file **BasiliskIIGUI.exe**. You will see this window with rows of tabs:

a. Increase the RAM allocated to the Emulator:

Select the **Memory** tab, and change the **RAM** size to a higher figure if you have sufficient RAM in your computer. It is best to allocate at least 64 MB if possible. (If you have 128 MB or more, allocating 64 MB is no problem.)

Note: in order to install certain large files such as Biblical World in Pictures, you may need temporarily to increase this memory to as much as 400 MB.

b. Create an additional virtual hard drive:

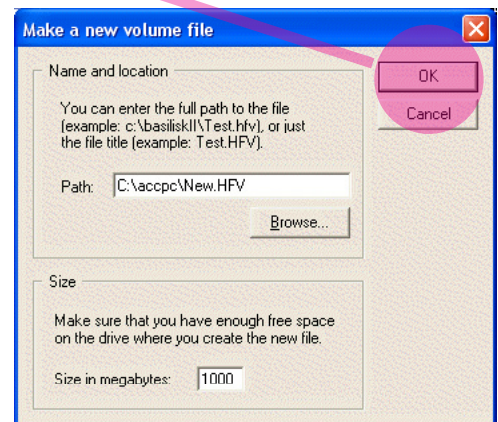
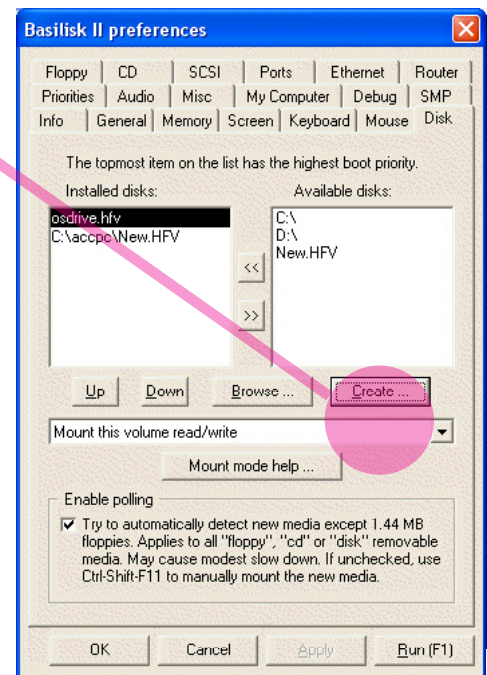
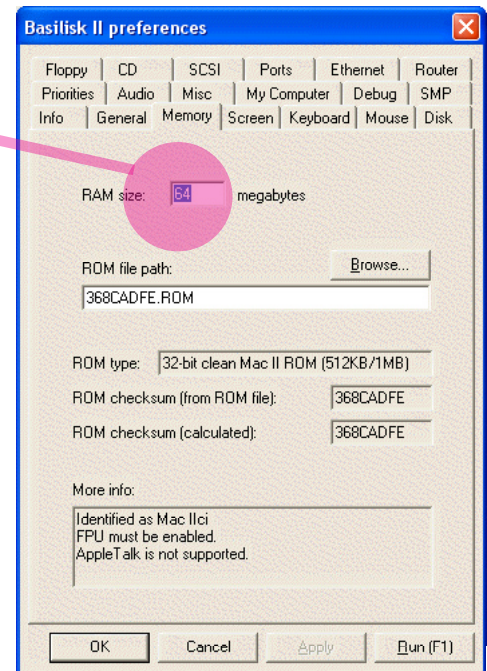
The default OS Drive is 200 MB drive and contains the system and other files including an old demo of Accordance. There is only room on this drive for a minimal installation of Accordance. If you have or plan to get more than the most basic Accordance package, you should create a new drive as follows:

1. Select the **Disk** tab, then click **Create**.
2. In the new window that appears, increase the size of the virtual drive depending upon how many Accordance modules you intend to install. You should increase the size to at least 500 MB, but if you have the hard disk space available, set it to 2000 MB (2 Gigs, which is the largest drive the emulator will allow).
3. As you add Accordance modules, you'll want more space. Of course, you can always create another drive at any time by using the BasiliskII Preference window, but splitting the modules between two or more drives makes installation a little more complicated.
4. You can also enter a new path name if you prefer to create the new virtual drive on another hard drive.
5. When you have increased the size of the virtual drive, click **OK** and the newly created drive will show up in the **Installed disks:** pane.

You will now have two hard drives showing there: **osdrive.hfv**, and the one you just created (default name is: **C:\accpc\New.HFV**).

The **osdrive.hfv** contains the Macintosh operating system and should be first in the list. If it is not, highlight it (click on it once) and click the **Up** button until it is first in the list. The newly created drive (listed second) is where you will install your Accordance software.

If you installing many large files, such as Library Premier, you will need to make another drive. To do this, click **Create** again and in the next window, change the size in megabytes again to 2000. In the path field put the number 1 between the "w" in new and the ".HFV" (it should now look like this: **C:\accpc\New1.HFV**).



c. Set up the External File System:

1. Click on the **My Computer** tab, and then check the box **Enable external file system**. This will put a "My Computer" icon on your Macintosh desktop, which allows you to save to and retrieve files from your Windows folders.
2. Make sure that your hard drive is checked on the list, and uncheck any other drives.

This icon is only a portal through which you may transfer files between Windows and the Basilisk system. You should not run any files through the portal, and you should transfer only files that are recognized by Windows as well as Mac such as: .htm, .pdf, .rtf, .txt, or .sit.

d. Enable the CD-ROM Drive:

1. Click on the **CD** tab, check the **CD-ROM enabled** check box, and check that the installed CD-ROM drive represents the correct letter/drive for your CD-ROM.

For XP it is usually the D drive, on Vista it is E.

However, if you have hard drives C and D, then your CD-ROM is most likely E drive. If, besides two hard drives you have a removable media drive (like a zip drive or extra CD-ROM burner), then your CD-ROM might be F or even G.

2. Use the arrow key between the panes to move the correct drive from the **Available cds** on the right to the **Installed cds** on the left.

Note: This is important to enable Basilisk to read a CD, however, 64bit computers do not allow BasiliskII to read a CD in any case. The only option is to install downloads and prepared .HFV files.

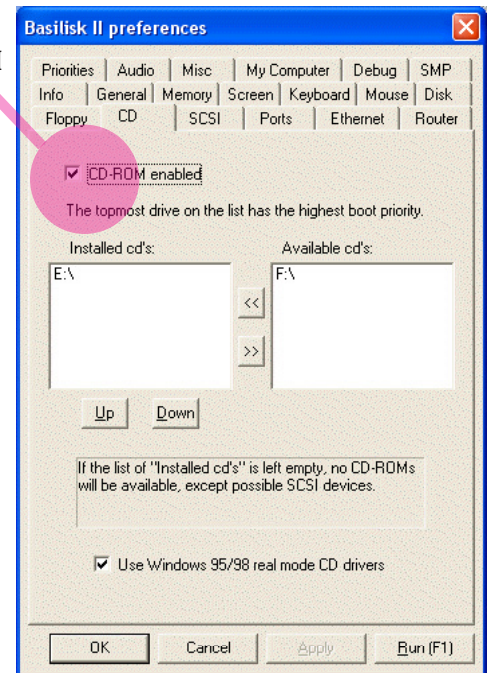
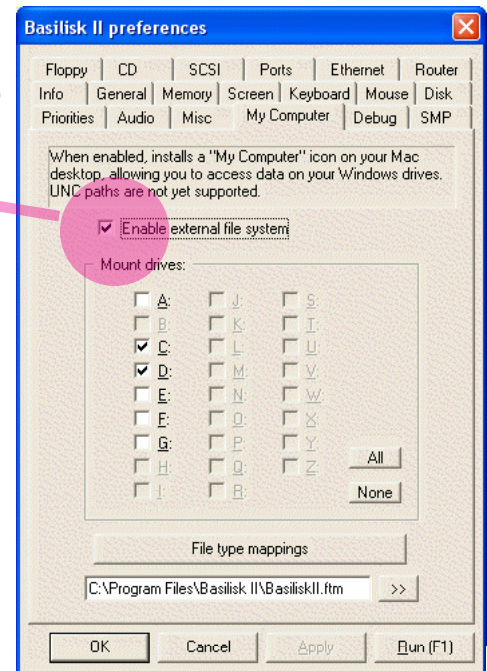
e. Set the Screen Colors:

Click on the **Screen** and set the **Colors** menu to **Thousands (16 bit)**. You can try the other screen settings if you wish, but Windows GDI full screen is usually the most stable.

f. Quit the Preferences

Click **OK** to set the preferences and quit BasiliskIIGUI.exe. You can also clicking **Run** at the bottom of the window to launch BasiliskII but this is less reliable.

Note: There are other customizations that can be made in the BasiliskII Preferences window, but for now, these are enough to get the emulator up and running. The Troubleshooting Tips section at the end of this manual suggests additional settings.



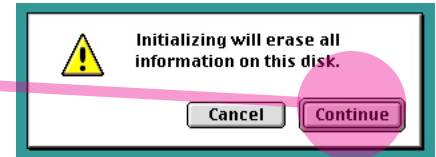
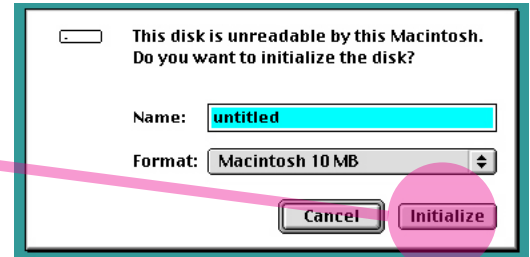
C. Running the emulator for the first time

Once you have done the above, you are ready to launch the emulator for the first time. Normally you will launch it by double-clicking the shortcut to **BasiliskII.exe**. After you see the opening Macintosh screens, you will be presented with the Macintosh desktop.

1. Initializing the New Drive

The Macintosh will initialize the new hard drive.

- When you run the emulator for the first time after creating a new virtual drive, it will give you the alert window “This is not a Macintosh Disk.” Don’t panic!
- Enter a name such as **Accordance disk** in the name field in place of **untitled**. Then click **Initialize**.
- A second warning appears that the drive will be erased. This does NOT affect any data on your Windows hard drive, but simply marks the space you allocated for the hard drive as a special Macintosh sector.
- Click **Continue**. Be patient while the virtual hard drive is created. If you allocated the full 2 Gigs, it will take a while! (There is no progress bar, so it may look like the computer has locked up—be patient.)



2. Introduction to the Macintosh System

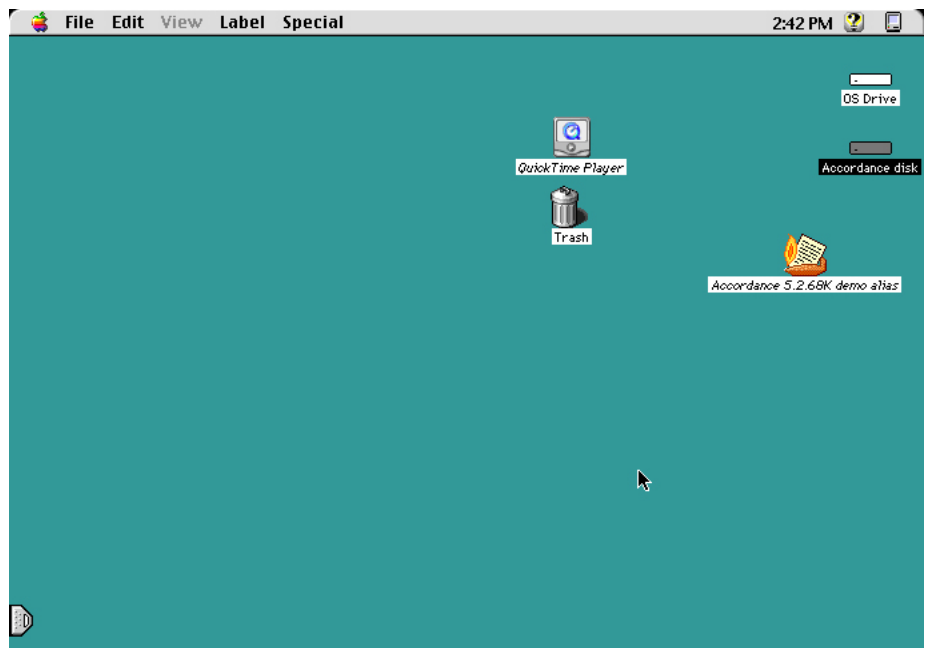
The following points are intended for the user with no prior experience on Macintosh.

a. The Desktop

The Macintosh desktop is a combination of a “My Computer” window and the Windows desktop, and will look like this:

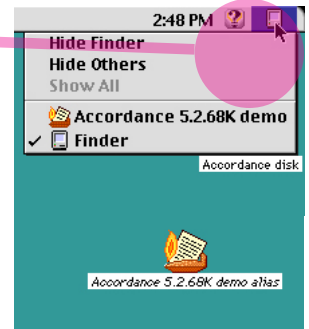
The icons might be arranged differently, but you should see the following:

- **OS Drive**
 - **My Computer**
 - The **Accordance CD** (if you inserted it into the CD-ROM drive before launching the emulator)
 - An **Accordance Demo** icon
 - A **QuickTime Player** icon
 - A second Hard drive (the one you created—if you didn’t give it a name, it will be called **untitled**, but you can click on the label to rename it)
 - The **Trash**.
- Volumes that appear on the desktop can be opened by double-clicking them.
 - You can toggle back to Windows by pressing **<Alt+Tab>**.



b. The Application Menu

- The little icon in the upper right hand corner of the screen is like the program bar at the bottom of your Windows desktop. While you are in the Finder (Desktop) the icon is a Macintosh. Every program you are currently running will show up under this icon when you click and hold.

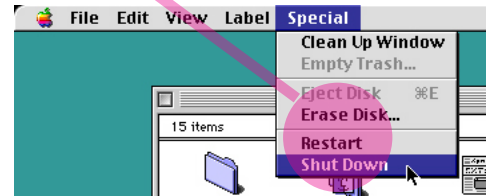


c. Shutting Down

- Shut down the Macintosh by clicking on the desktop and selecting **Shut Down** in the **Special** menu. (This menu is like your **Start** menu in Windows that includes **Shut down, Restart**, etc.).

It is best to shut down the emulator before putting the PC to sleep.

- If the emulator “hangs,” press **<Ctrl+Alt+Delete>** to bring up the **Task Manager**, highlight **BasiliskII**, and choose **End Task**.
- If you have to force a shut down of the emulator using the Task Manager, the next time you launch the emulator a warning will be displayed noting that the Macintosh was not shut down properly. Just click **OK**.



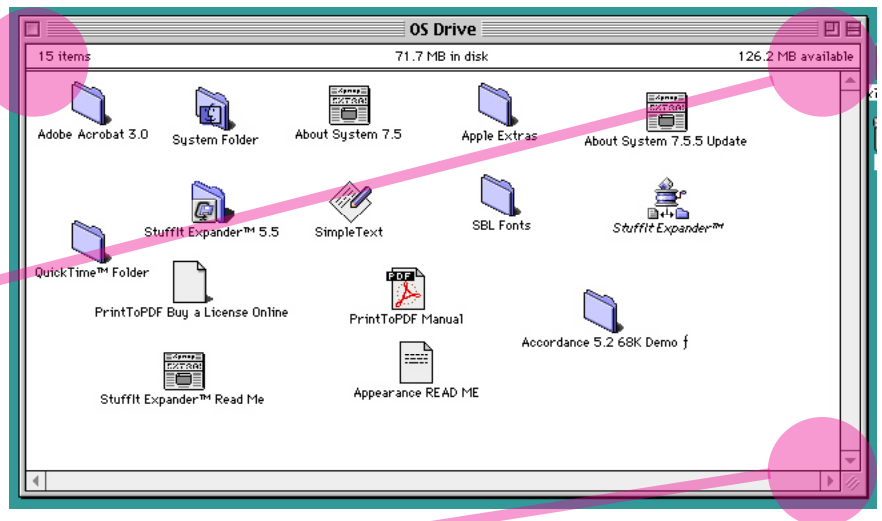
Note: You can suppress this warning in the **Apple** menu>**Control Panels**>**General Controls** and uncheck **Shut Down Warning**.

d. Emptying the Trash

- The trash can is similar to the recycle bin on the Windows side. Empty the trash with the **Special** menu.

e. The Window

- Double-click on a hard drive icon to open a **Finder** window.
- **Close** the window by clicking the box in the top **left** corner (not the X in the top right as in Windows).
- **Move** the window by dragging the title bar at the **top**.
- **Collapse** the window to just the title bar and restore it by clicking the box in the top right corner. Double-clicking on the Title bar will also collapse that window.
- **Expand** the window to full screen and **restore** it by clicking the box inside the top right corner.
- **Resize** the window by dragging the box in the bottom right corner.



f. Launching and Quitting Programs

- **Launch** a program by double-clicking on the application or its alias.
- **Quit** a program by selecting **Quit** from the **File** menu, or pressing **<Alt+Q>**.

Note: Unlike Windows, when you close a window in Macintosh, it does not stop the program from running. Programs can run without any open windows. To see and access what is running, look in the Application menu in the top right corner of the screen. When you bring a program to the front, the menus and the icon of the Application menu change to that program, even if there are no windows open. You can usually open a new window from the **File** menu.

g. Keyboard Commands

Many key command shortcuts are the equivalent to those on Windows.

- The **Command** key (=Alt on your keyboard) is the equivalent of Control on Windows. Thus <Alt+C> copies selected text, <Alt+O> opens a file, etc. This key is also called the Apple key, and is identified on the menus and in the documentation by this symbol: ⌘.
- Some shortcuts use the **Control** key in addition to the Command key.
- Shortcuts which use the **Option** key will work with your Windows key.

If you do not have a Windows key on your laptop, you can use **BasiliskII Preferences>Keyboard** to assign the Option key to one of the F keys.

h. Creating a Desktop Shortcut (Alias)

- Unlike some Windows systems, you cannot create an alias (=shortcut) by dragging an item to the desktop. Do NOT move the Accordance program to the desktop, it will not run there properly.

An alias can be placed on the desktop, or in the **System Folder>Apple Menu items** or **Startup items** for easy access to an application.

See below for details on making an alias of Accordance.

i. The Accordance Demo

The **Accordance demo** alias lets you try out an old demo version of Accordance. If you have purchased Accordance, you do not need the demo, so you can drag both the alias and the folder entitled **Accordance demo** in the OS Drive to the trash can. If you do not have the version 9 demo with the Starter Collection, you can download the installers from the website.

D. Installing Accordance Software

Most files cannot simply be copied to and from Windows into Basilisk since they lose their “resource fork” and become unusable. Text, RTF, older PDF, and HTML files can be copied. Basilisk cannot read a DVD, nor most CD-ROMs, nor any external drives.

Thus there are only three ways to install Accordance software and modules:

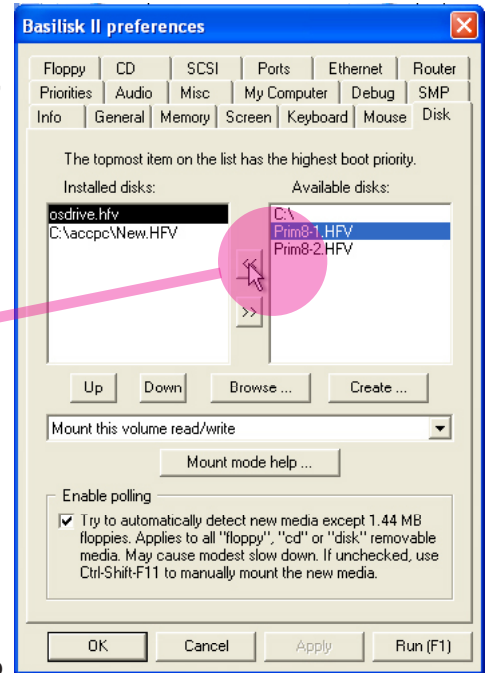
- You can **download** small files from the internet as **compressed .sit files**, copy them into Basilisk, and double-click to unstuff using the supplied StuffIt Expander. The unstuffing can be rather slow on large files. (Files can also be transferred on a thumb drive from a Mac in this way, as long as an older StuffIt compression is used.)
- Accordance **CD-ROMs** can be read in Basilisk (except on Windows 7 and Vista 64 bit computers). Be sure to follow the directions. (To burn a CD-ROM for Basilisk, use Toast and make it Mac & PC compatible and HFS Standard.)
- A **.HFV virtual hard drive** can be prepared on another copy of Basilisk, loaded with the files, copied, and installed into Basilisk. Accordance offers some software, including the Primary DVD, on special DVDs for this purpose. For 64 bit PCs we also provide special disks or downloads with .sit and .HFV files for modules that are normally supplied by download to Mac and iOS or on CD-ROM.

These three methods are described in detail below.

1. Accordance Supplied .HFV Files

Whether you download these files or receive them on disk, the procedure is similar:

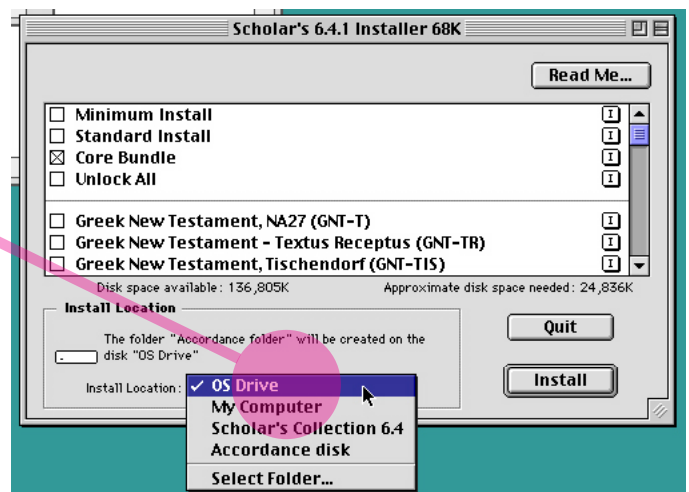
1. If the files were downloaded as a .zip, unstuff them using WindowsZip or 7-Zip.
Winzip can be downloaded as a free trial at www.winzip.com, and 7-Zip is free from www.7-zip.org.
2. Copy or move the .HFV files to the **C:/accpc** folder which contains the emulator files. Copy the documentation to your Accordance files folder.
3. Eject the DVD.
4. Run **BasiliskGUI.exe** and select the **Disk** tab.
5. Move the **.HFV** files which you copied from the right column to the left column, either by clicking the arrow button or double-clicking the file name.
6. Click **OK** to quit the preferences.
7. Run Basilisk. You will see the additional virtual drives
8. Follow the instructions supplied with each disk, and run the **68k installers** as described below.
9. Once installation is complete you can return to **BasiliskGUI.exe** and move the supplied .HFV files from the left column to the right column so that they do not appear on the Basilisk desktop until you need them again for further installations.
10. For some DVDs with large files, you are instructed to open the modules directly on these drives. In these cases, keep the **.HFV** files in the left column.



Running the Accordance Installer

For each .HFV you must find the correct installer, select the items and location for installation, and wait while the installer completes the installation.

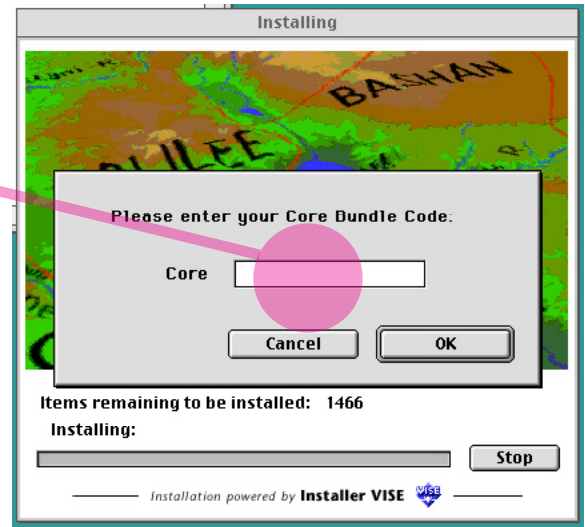
1. If you do not see an alias of the installer on the desktop, double-click the icon of the **.HFV** disk. This will open a window showing the contents of the disk.
2. Double-click on the **Installer** program (e.g. **Primary 9-1.68K**) and run through the license and Read Me screen. You will come to the installation screen where you can pick the level and modules you will install, and the location where you will install the Accordance program and files.
4. Select the **Standard Install** or **Easy Install** unless you have the code for another level such as **Graphics Bundle**. Scroll down and click on the boxes next to any **additional modules** you have purchased separately.
5. Click on the pop-up menu showing **OS Drive** and pick the virtual hard drive you just created (if you did not give it a name, it will be called **untitled**). Be sure to install onto your Accordance drive. It is NOT recommended that you install onto the supplied drives, nor that you open the modules directly on these drives, unless instructed to do so. Please install them using the installers.



6. Now click **Install**.

Do NOT install Accordance on the OS Drive as there is not enough space on that drive.

7. You may be prompted for the **unlock codes** for the packages and modules you purchased. The unlock codes are on your invoice from Accordance, in your online account, or on an insert in the disk package.
8. Be patient. Installation of large modules can take up to an hour. The progress bar does not move while modules are being copied to the hard drive.
9. When the installer is finished, a Registration screen appears. Click **Later** to dismiss it, and **Quit** to close the Installer. If you did NOT purchase Accordance from OakTree Software, please remember to send an e-mail to oaktree@accordancebible.com asking them to register your purchases.



If you have other Accordance modules to install from other Accordance HFVs, follow the steps above and repeat the installation process.

2. Installing Accordance Software from Downloads

The latest Accordance program, demo, certain modules and module updates, and many other resources are available at:

www.accordancebible.com/downloads/index.php

You can download the installers to Windows using your Internet browser, transfer them to the emulator, and run the installers to upgrade or add to your Accordance system as follows:

- a. In the browser **select the 68K installers** for the items you need (some require you to purchase an unlock code).
- b. **Download** the file(s) to your Windows desktop or preferred location.
- c. Move the downloaded .sit file to a folder on your **C:** drive (e.g., **C:/Accordance files**).
- d. Launch the emulator, and open **My Computer**. Navigate to the location of the .sit file you want to install, and drag the icon to one of your Macintosh disks to **copy** it.
- e. Double-click the file to **unstuff** it on the Macintosh using StuffIt Expander (which is already installed on the OS Drive)
- f. **Double-click** the installer file to begin installation.
- g. Select the correct drive for the installation and click **Install**.

3. Installing from CD-ROMs (Windows XP or Vista 32 bit only)

a. Order of the CD-ROMs

Please look through your Accordance CD-ROMs and decide which one you should install first.

- Installation of Accordance is easy if you only have one or two recent CD-ROMs to install. The version number of Accordance on each CD-ROM is usually printed on the CD label itself. If all your CD-ROMs have version 7 or higher, the order of installation does not really matter. However, it is usually best to install from the earliest to the latest.

Note: Once you have installed version 7 or higher you should not run an earlier installer. You can copy over modules from earlier CDs to the Accordance folder, and open them in Accordance.

- Please check the website at: www.accordancebible.com/install for details of the order of installation, especially for older CD-ROMs

b. Reading the CD-ROM in the Emulator

It can be tricky to get the emulator to read a CD-ROM as a Macintosh disk.

1. The most reliable way to read a CD-ROM is to shut down the emulator each time before inserting the CD. To do this, click on the **Special** menu at the top of the desktop and choose **Shut Down**. This will return you to the Windows desktop.
2. Then insert the Accordance CD you wish to install, let it spin up for a few seconds, and then relaunch the emulator.

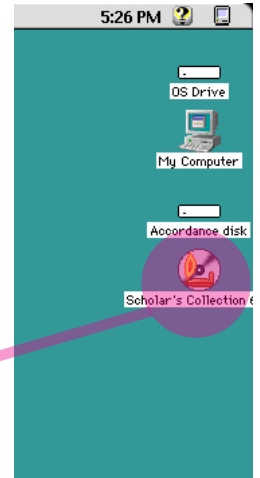
On **Vista 32 bit** you must right-click to run BasiliskII as an administrator, and click to confirm. (For Vista 64 bit contact technical support.)

On **Windows 7** right click BasiliskII. Click on **Properties** in the next window. Then click the compatibility tab, and choose **Run this program in compatibility mode for:** and choose **Windows XP (Service Pack 3)** from the drop down menu.

3. If the CD still does not appear, or if it shows up as an Audio CD, go to the **Troubleshooting** section of this manual.

It is best to follow this procedure each time you have another CD-ROM to install.

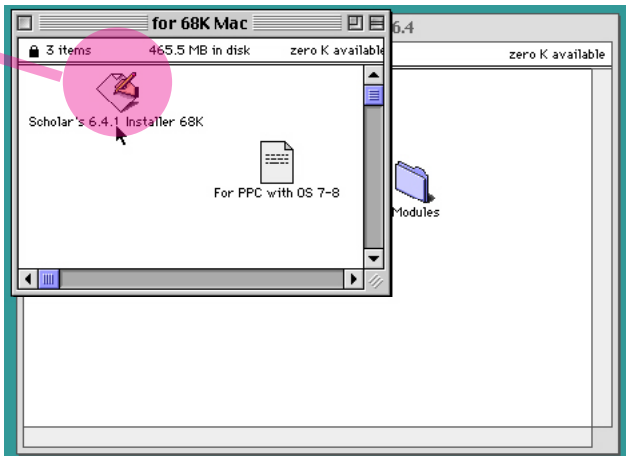
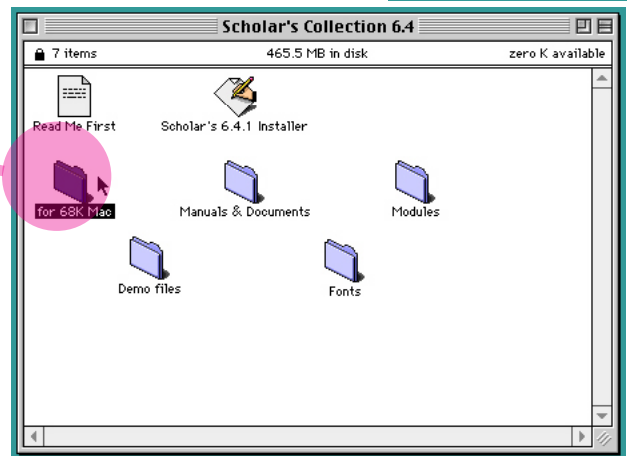
Please do NOT attempt to run an installer or access the CD-ROM via the My Computer icon. The CD icon must appear on the Macintosh desktop in order to install from it. See below.



c. Running the Installer

1. Double-click the icon of the **Accordance CD-ROM** on the desktop. This will open a window showing the contents of the CD.
2. Double-click on the folder **for 68K Mac**. This will open the folder to reveal its contents in a new window. You **must use the .68K installer** except on certain older CDs where this folder is not present, and you can use the main installer. If you try to run the wrong installer you will get a dialog box saying "The application program "(Name)" could not be opened, because an error of type-192 occurred."
3. Double-click on the **Installer** program and follow the above instructions for installers on .HFV files.

If you have other Accordance modules to install from other Accordance CDs, follow the steps above to insert the next CD and repeat the installation process.



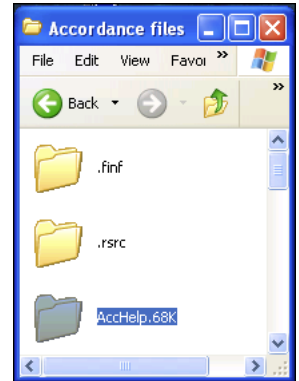
d. Older CD-ROMs

Modules from older CD-ROMs (version 6 or earlier) can simply be copied to the **Accordance folder/Modules/Texts** or **Tools** and then opened in Accordance. Accordance will request an unlock code if needed. This method is only recommended for CDs for which there is no upgrade available.

E. Reading the Documentation on Windows

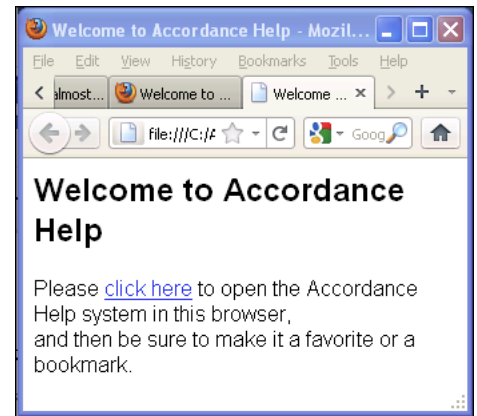
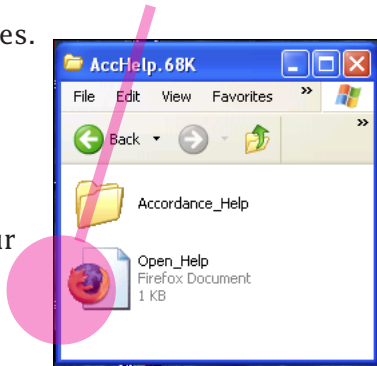
1. Accessing the Help Files

The rewritten Help files include current and comprehensive information on your version of Accordance. The Help files are accessed via your browser (such as Internet Explorer or Firefox). You should first bookmark the Help files in your browser. Then, before loading the emulator, open your browser and use the **Favorites** link to go to the Help file. Once you are working in the emulator you can then use **<Alt+Tab>** to switch between the help and Accordance.



To Find and Bookmark the Help Files in your Browser:

1. Copy the **AccHelp.68K** folder from the DVD or CD-ROM, or download **AccHelp.68K.zip** from www.accordancebible.com/downloads/documentation.php, and unzip it. Move the folder to the **Accordance files** folder you have created.
2. Open the folder and double-click the **Open_Help.htm** file. It will open in your default browser.
3. Click the link to open the Help files. The Accordance Help appears in your browser.
5. Add the Accordance Help to your favorites or bookmarks (**Favorites>Add to Favorites**). You may prefer to add this to your **Links** bar, for quick access.



To use the Help files while working with Accordance in the emulator:

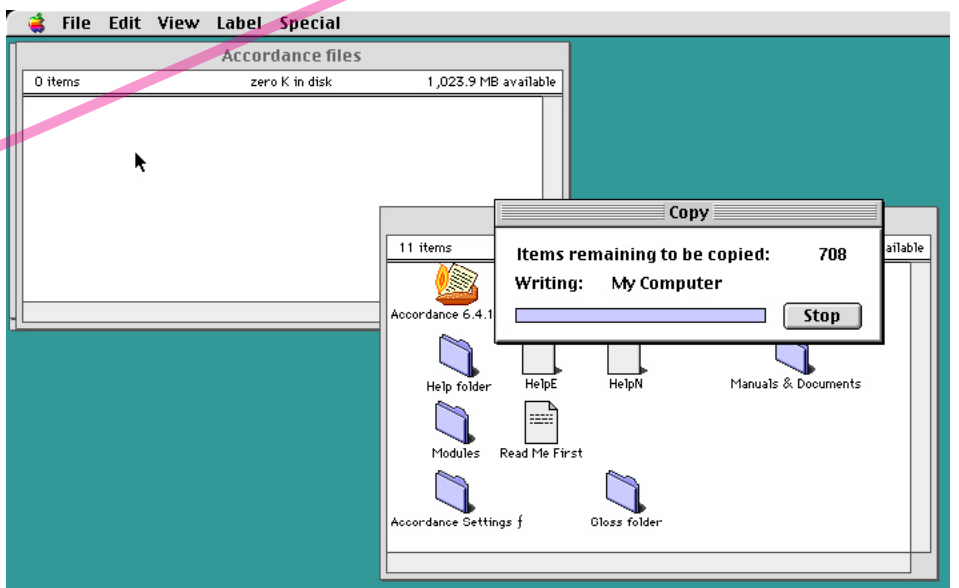
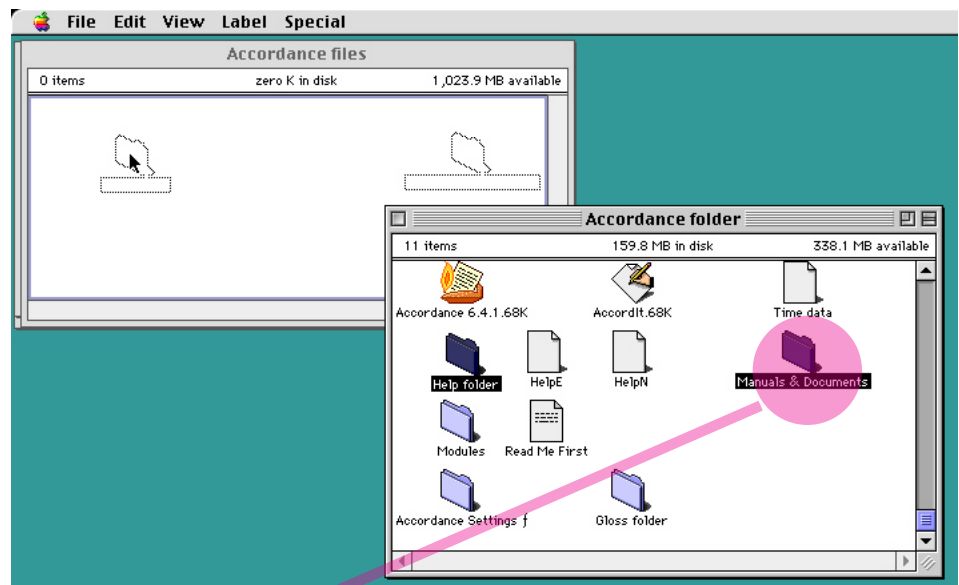
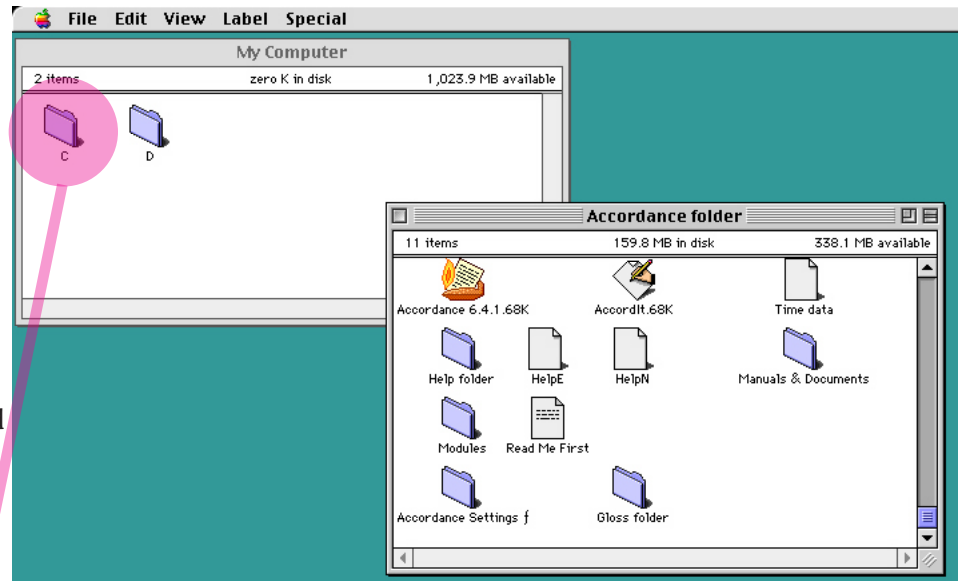
1. Open your browser and go to the Accordance Help via your Favorites (bookmark) link.
2. Open the emulator and load Accordance.
3. Use **<Alt+Tab>** to switch between your browser and Accordance.

Note: You cannot access the window help, but all the other features of the Help are available.

2. Copying the PDF Files to Windows

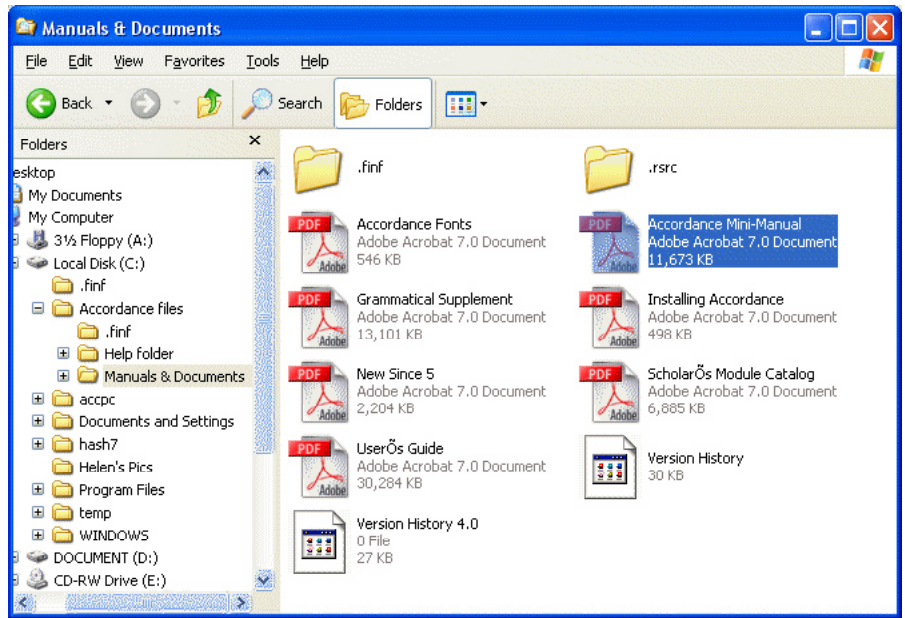
The PDF documentation supplied with Accordance CANNOT be read on the emulator. However, the files can and should be transferred to Windows where they are easy to access.

1. Double-click the **My Computer** icon on the Macintosh desktop. A Finder window opens showing the available drives.
2. Double-click the **C:** folder, and scroll it if necessary so your **Accordance files** folder is visible.
3. Open the **Accordance folder** on the emulator drive on which you installed it, and drag the title bar of the window down and to the right.
4. Drag **Manuals & Documents** folder to the **Accordance files** folder and wait while the computer copies them to the Windows location.



3. Reading the PDF Files

1. In Windows, find the Manuals & Documents folder in **C:** **Accordance files** and double-click on any PDF file to open it. The **User's Guide** and Supplements include complete documentation for all the features of Accordance 7.1. The **Accordance Fonts** has details and keyboard layouts for the special fonts used in Accordance.
2. If **Adobe Reader 5** or above is correctly installed, it will open the selected file. The latest Reader can be downloaded free from **Adobe Systems Incorporated**.

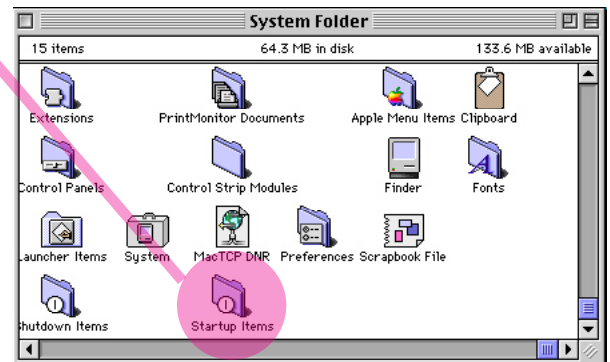
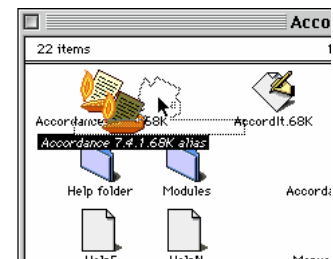
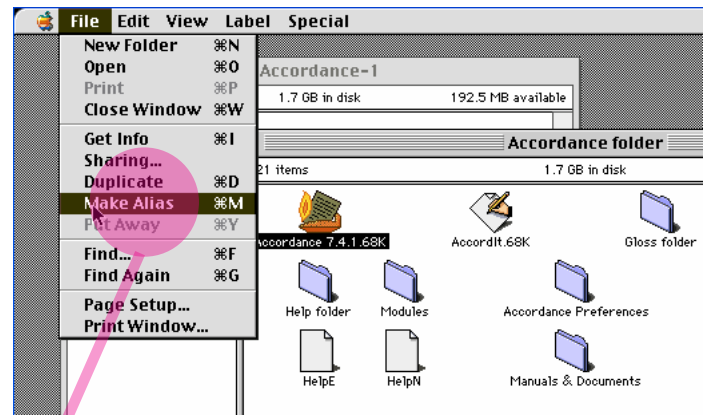


F. Setting up Accordance

1. Launching Accordance

a. Make an alias of Accordance for convenient access:

1. Open the **Accordance folder** on the appropriate drive, and find the icon labeled **Accordance 9.x.68K**, and click once on the icon to select it.
2. Press **Command-M <Alt+M>** or select **Make Alias** from the **File** menu to make an alias of the Accordance program
3. Drag the alias to the desktop if you want to run it from there.
4. Copy the alias to **OS Drive>System folder>Startup items** if you want to launch Accordance when you run the emulator, and to **OS Drive>System folder>Apple Menu items** to place it in the **Apple** menu. (The Apple menu at the left top corner of the desktop is equivalent (more or less) to the **Start** menu at the bottom left of the Windows desktop.) This is not generally recommended because of the need to replace the alias for each program upgrade.
5. Remember to update the alias each time the program is updated.



b. Run and Register the program:

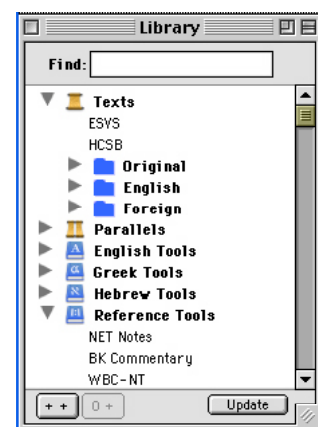
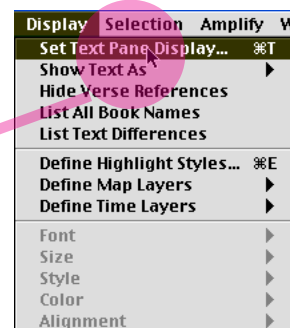
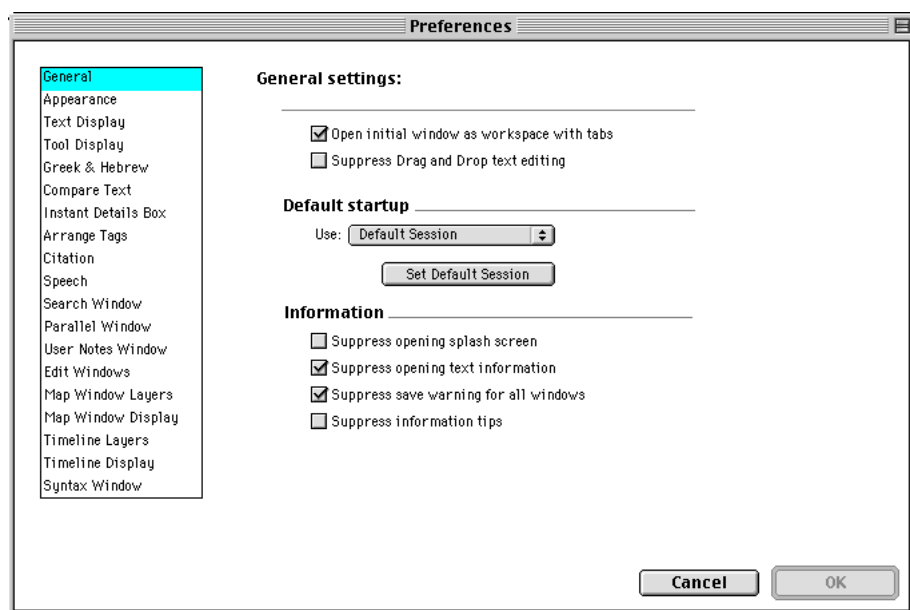
1. Run Accordance by double-clicking on its icon.
2. The first time you run it, dialog boxes ask you to register the program with your name, and to confirm the name.
3. After any installation of modules, the program hesitates as it opens while it adds the modules to the pop-up menus. This will only happen the first time you start the Accordance program. Thereafter, you will be amazed how quickly the program loads!
4. The first time you run Accordance the Setup Assistant will walk you through some preliminary preference settings.
5. You can now begin to use Accordance.

2. Setting Preferences

At any time you can make changes to your preferences so that Accordance opens and runs the way you like it. These are just some useful examples:

- **Edit menu>Preferences>General** lets you choose to open the first window in a **Workspace with tabs** to help keep your windows organized, and to set Accordance to open to a defined set of windows, or to where it was when you last quit it. You can also suppress some of the informational dialog windows to speed up opening of windows.
- **Edit menu>Preferences>Search window** lets you choose the default text to open, and the default **Details** (we recommend **Graph** and **Analysis**).
- **Edit menu>Preferences>Greek & Hebrew** lets you set typing and export options for these languages (see [below](#)).
- **Display menu>Set windowtype Display** lets you change the current display of the front window or tab or selected pane, and save the changes as new defaults if so desired.
- **Window menu>Library Window** opens this window which lets you organize the Bibles and other modules with your favorites at the top. The top module in each category will open by default.

For details of these and other features of the software, please see the Help documentation supplied with Accordance.



G. Printing

Using the emulator you cannot print directly. You can try the PrintToPDF utility to create a PDF file which you can then print in Windows. **It is not always successful.**

You can first use the **Print Settings** in the **File** menu to specify whether you want to print parallel panes and other settings.

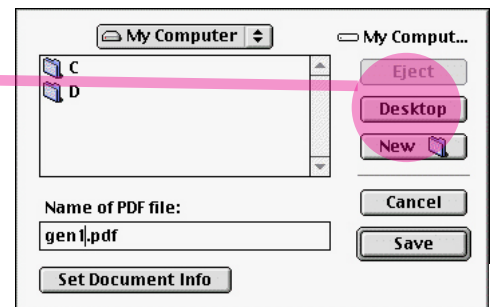
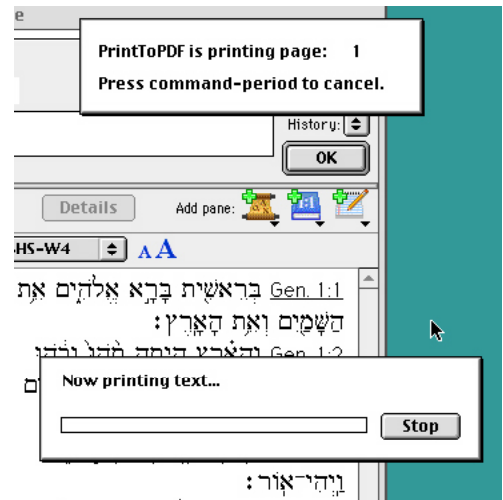
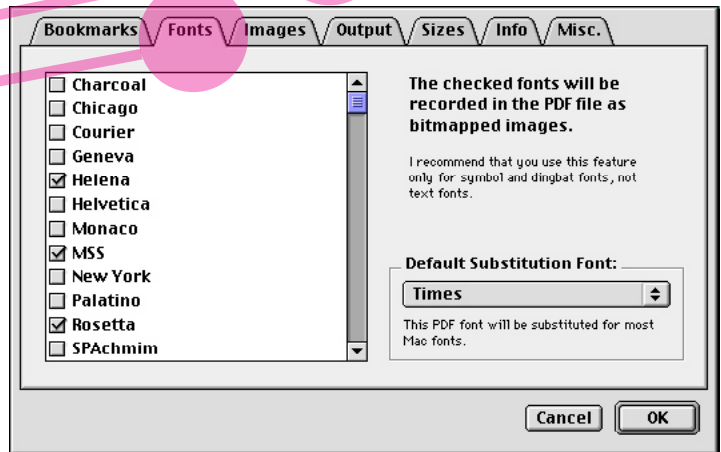
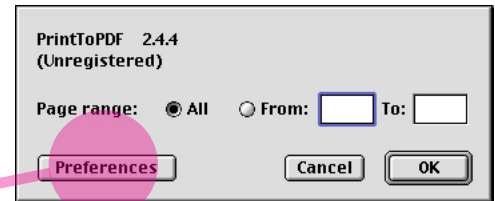
To use PrintToPDF:

1. Choose **Print** in the **File** menu of Accordance. The PrintToPDF dialog box appears.
2. To include **Greek and Hebrew** you must do the following **one time setup**:
 - a. Click **Preferences** and click the **Fonts** tab and check the Accordance fonts: *Arab, Helena, MSS, Peshitta, Rosetta, Sylvanus, and Yehudit*, so that these are included in the output.
 - b. In the **Output** tab, you can choose options to always have the PDF file saved to a designated folder, or to choose the destination each time you print. (You can configure the rest of the tabs as you like).
 - c. Then click **OK**. This will return you to the Print dialog. There should be no need to set the Preferences again.
3. Click **OK** in the Print dialog. The printing procedure will continue.
4. If you have selected a destination folder in the Preferences, the PDF file will be saved there with a default name such as **workspace.pdf**.
5. If not, you will be asked for the name and location where you want the PDF file to be saved.

You can either save the file directly to Windows, or save it on the Macintosh and then move it to Windows.

To save it to Windows: click **Desktop** on the right of the dialog box. From the files that appear, select **My Computer**. This will allow you to choose the location on your Windows side where you want the file to reside (such as **C: Accordance files**).

Give the file a name but leave the .pdf suffix and click **Save**. (The "path" to this folder will be remembered during the current Accordance session.)
6. If you saved the file to the Macintosh desktop or drive, you can open it on the Macintosh side to check it. However, to print it you must use the **My Computer** portal to copy it to the Windows side.



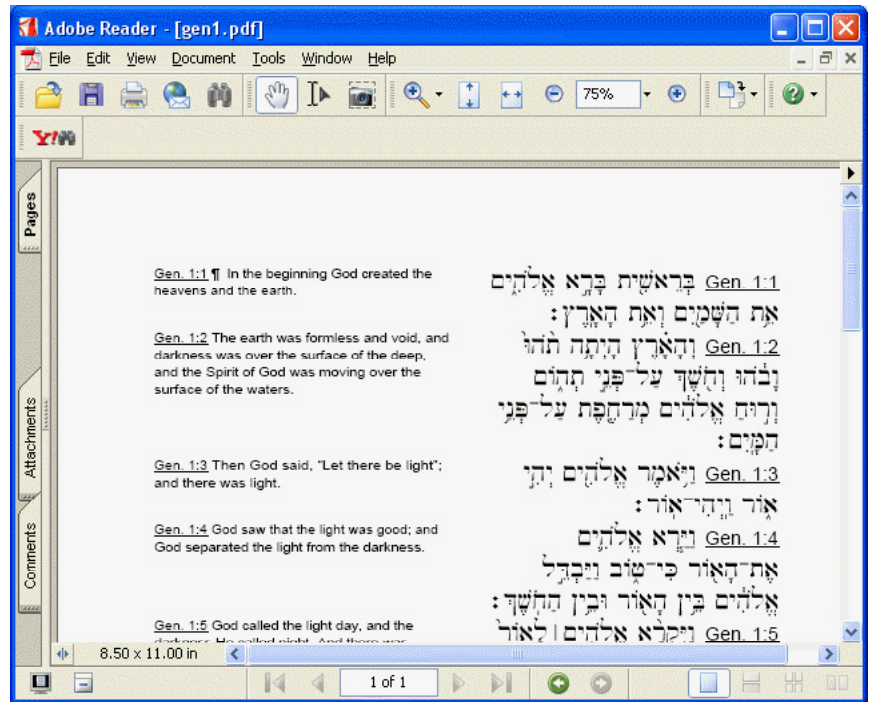
- Switch to Windows, locate and open the file in Adobe Reader (double-clicking the file should open it if Reader is loaded properly). Then print to your default printer.

Note: Setting Preferences in Print to PDF may cause the current session of the emulator to crash. Also be sure to wait while the PDF file is written to disk.

PrintToPDF Fixes

If PrintToPDF does not save or use the Font preferences, try the following fixes:

- Trash the Preferences for PrintToPDF in case they are corrupt (in the **OS Drive>System Folder>Preferences** folder).
- Another possibility is that not enough memory is allocated to the emulator. Increase the memory in the **BasiliskII Preferences>Memory** tab (**BasiliskIIGUI.exe**) and see if this makes any difference.
- Also, in the BasiliskII Preferences>**Disk** tab, make sure that the OS Drive is set to "Mount this volume read/write."
- Check if there is sufficient room on OS Drive to allow rewriting files, by opening the OS Drive window on the Macintosh and looking just under the top right corner. You should see at least 5 MB available.
- One other possibility: in the BasiliskII Preferences>**Screen** tab, select DirectX(in a window) or DirectX(full screen), not Windows GDI. In some systems Windows GDI causes conflict



Printer Drivers

Some printer drivers which allow direct printing such as Chuck's Printer Drivers are available on-line. If you want to try them, you can download them from: <http://www.macdrivermuseum.net/printer.shtml>.

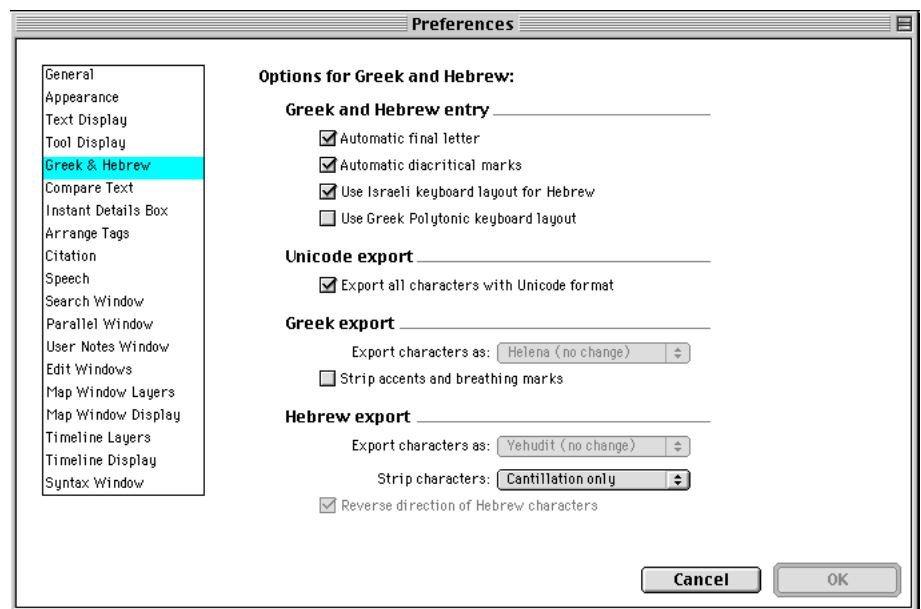
H. Exporting Text

There are two methods of exporting text from Accordance to a word processor such as Word: copy-and paste, or saving a text file. You can **select and copy** text (and graphics) in Accordance and simply **paste** it into Word. This works well for English text. OR you can save the text in the front window or selected pane as a **text file** (plain ASCII text or RTF) which you can open in Word.

- **Greek and Hebrew text** must be converted from the Accordance fonts to fonts that are available on your system (as the “mapping” of the characters in our fonts is different from all fonts on Windows). Accordance can be set to perform this conversion, either to older Greek and Hebrew fonts such as those from Linguists Software or SBL, or to the newer Unicode system. With the older fonts you can use either method to transfer the text.
- **Unicode** can only be exported by saving the file as RTF. It is not supported by the current emulator clipboard so you cannot copy and paste the text. However, among the advantages of Unicode is the fact that Word for Windows 2000 and above supports Unicode with right to left text entry. The text is also compatible with other computers, e-mail, webpages etc., anywhere that Unicode fonts are used and available with the relevant characters. Please see our Unicode webpage for more details:
<http://www.accordancebible.com/support/unicode.php>

To set the export of Greek and Hebrew:

1. Open **Preferences** in the **Edit** menu.
2. Click on **Greek & Hebrew** in the list.
3. For Unicode export simply click the **Unicode** check box, and for Hebrew select **Cantillation only** from the **Strip characters** pop-up menu.
4. Alternately, for older fonts, select the font from the pop-up menus for Greek and Hebrew.
5. Please see the Accordance documentation for details of all the options.



To copy and paste into Word:

1. Select the text you want to copy.
2. Choose **Edit** menu>**Copy** or press <Alt+C>.
3. Press <Alt+Tab> to switch to Windows.
4. Open Word and press <Ctrl+V> to paste the text.
5. You may need to select the Greek or Hebrew text and choose the desired (non-Unicode) font.

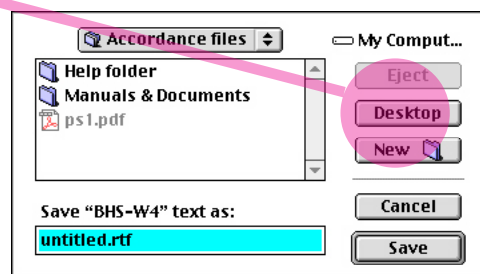
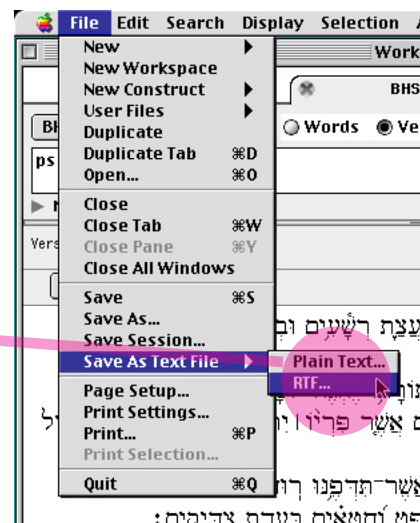
Rich Text Format

RTF is an abbreviation for “Rich Text Format”. Rich text format is a special type of coding that saves special information such as text, formatting, etc. in your document in a way that other software programs can recognize. For example, RTF files let you transfer text from Accordance to MS Word.

You must first save the text as an RTF file, from within Accordance. Afterwards, you can open the RTF file in Word. You should also set your Accordance Preferences for Greek and Hebrew, so that the text is exported properly.

To save text in an RTF file and open it in Word:

1. Display the text that you want to export in the front window or text pane. The entire text displayed in this window will be saved.
2. On the **File** menu, select **Save As Text File>RTF**.
A dialog box appears.
3. In the dialog box, click **Desktop** and select **My Computer**, then navigate to the location on your computer where you will save .rtf files. In this example, files are saved in a directory named **Accordance files**.
4. Name your file. Make sure that you do not delete the “.rtf” file extension.
5. Click **Save**. The file is saved in the directory. Be sure to wait while the RTF file is written to disk.
6. When you are ready to begin working in Word, you may prefer to exit Accordance and BasiliskII.
7. Navigate to the **Accordance files** directory and open your .rtf file in Word.



Adjusting the Hebrew Text:

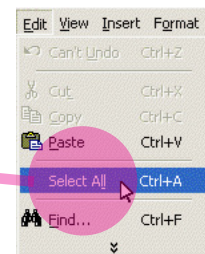
For Hebrew text in Unicode, there are a few formatting changes you will need to make before you can work with the text. Before performing these steps, make sure that you have the Hebrew Language enabled for your Office programs.

Once you have set up your computer to handle Hebrew, follow the directions below.

The text is initially left justified. In addition, the English verse references are on the left.

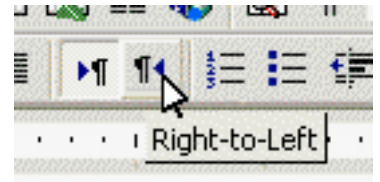
Gen. 1:1 בראשית ברא אל הים את השמים ואת הארץ:
Gen. 1:2 והארץ היתה תהו ובהו ורח אלהים מרחפת על פני המים:
Gen. 1:3 ויאמר אל הים יהי אור ויהי אור:

1. Select all of the text in the document by doing one of the following:
Select **Select All** from the **Edit** menu, or press **<Ctrl+A>**.

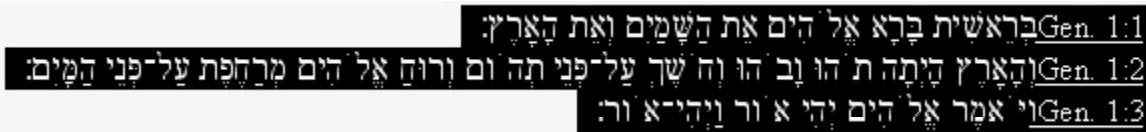


2. Change the direction of the text using the language **Right-to-Left** paragraph icon:

If you do not have the **Right-to-Left** icon in Word, the Hebrew language module has either not been installed, or is not installed properly. Do NOT use the justification icon. This will not change the direction of the text according to language.



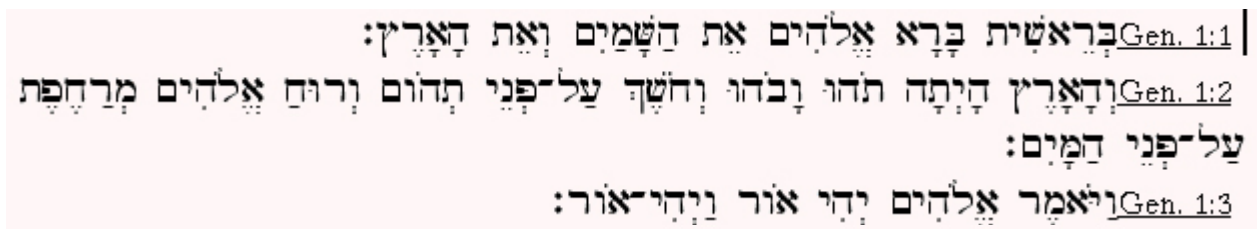
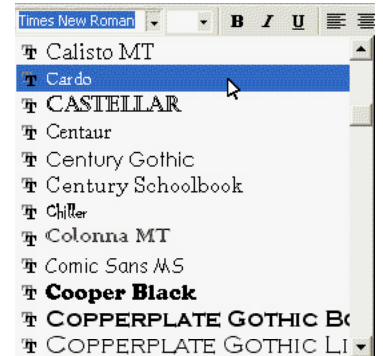
3. After changing the language direction, the text appears basically correct. Note that some of the vowel points and spacing are still not correct.



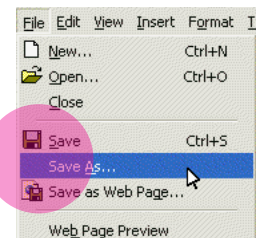
4. Select all of the text and apply a dedicated Hebrew True Type font, such as *SBL Hebrew* or *Cardo*.

The Hebrew fonts are provided when you install the Office Language Pack for Hebrew.

Different fonts will handle the vowels slightly differently. You can experiment to find the one you like best.

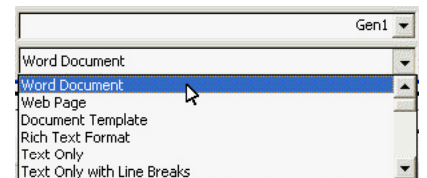


5. Save the document as a Word “.doc” file, using **Save as** in the **File** menu.. (This step is most important to assure that you have the Word document just as you want it.)



Note: In some cases, quotation marks may be out of place, we are not sure why this happens, as it does not happen all the time.

We cannot provide support for Word on Windows, but we have offered some suggestions in [Hebrew Word Troubleshooting Tips](#).



J. Troubleshooting Tips

Reading CD-ROMs

Q: I can't seem to get the Accordance CD to mount on the Macintosh Desktop. It either does not mount or appears as an Audio CD. What's the problem?

A: First, see and follow the instructions above to:

1. Check that you are running Windows XP
2. Enable the CD Drive in BasiliskII Preferences
3. Shut down the emulator, insert the CD, and restart the emulator: on **Vista 32 bit** right click BasiliskII and run as admin.
4. If you still have problems, check the tips below:

BasiliskII Preferences

- If you are using a laptop that you dock at your desk, the CD drive designation may change when docked or undocked (i.e., when docked the CD may be E:\ drive, but undocked it may be D:\). Move all the drives that show up on the available side to the installed side.
- If you have a Zip drive or other removable media drive on your computer, the drive letters will change depending upon whether or not you have a Zip disk (or other removable media) loaded into the drive at start up.
- If you have more than one CD-ROM on your computer, make sure both drive letters appear in the **Installed cds** pane. If your CD-Rom drive appears in the **Available cds** pane, highlight it (click it once) and use the arrow between the two panes to move it to the **Installed cds** pane.
- Also, make sure that your Windows hard drive is not listed in the **Installed cds** pane. If it is, highlight it (click it once) and use the arrows to move to the **Available cds** pane.

Windows XP

- Windows XP has routine for accessing the CD-ROM of your computer. XP presumes every CD has an "auto-run" so whenever you put a CD in, it captures the CD-ROM, meaning the emulator is not given privileges to the CD-ROM functions. To overcome this, make sure the CD is loaded BEFORE you launch the emulator. We have found that the majority of time this overcomes the problem.
- You may need to copy the cdenable.sys file to your system. Check with tech support.

Windows CD-ROMs are ejected

- The emulator will often not mount a CD intended for a Windows environment, especially if the Windows CD has an auto run feature (meaning it automatically opens an install window when you put it in your Windows CD). The easiest workaround is simply to disable the CD function from the emulator once you have loaded in the Accordance software. You disable the CD function by unchecking the box on the CD Tab in the BasiliskII Preferences (**C:\accpc\BasiliskIIGUI.exe**). This allows you to use your Windows CDs without conflicts with the emulator.
- When you need to use a CD on the Macintosh side to load more Accordance modules, simply enable the CD function for the install, and then disable it again when you are finished.

Macintosh only CD-ROMs

- If the CD was “burned” as a Macintosh only CD, it may not be readable by the CD-ROM drive in your machine. Occasional disks from Accordance have had this problem. The workaround is to burn a copy of the disk and then use the copy to load the Accordance program and/or modules into the emulator (or order an upgrade CD).

Vista Issues

Q: What special issues occur with running BasiliskII on Vista?

A: Many users have successfully installed BasiliskII and Accordance on Vista, but we have seen occasional problems:

1. On Vista 64 bit BasiliskII cannot read Accordance or other CD-ROMs. Only downloaded files, or files supplied as .HFV files can be installed. Please contact tech support for assistance.
2. The fact that many new laptops and some desktops come with a virtual partition in the HD that sectors a hidden part of the HD for automatic backup causes problems. Basilisk does not see this hidden partition; thus, it numbers the drives incorrectly. The computer as from the manufacturer has C: and hidden D: as auto backup, making CD-R reader E:, but Basilisk sees it as D, thus it does not find it. This seems to be the case with all Hewlett Packard computers, and a few others (newer Compaq and Toshiba).
3. In addition, if the computer has a number of other peripheral devices, the way Vista treats the CD-Rom when it assigns a new drive letter (i.e., with hard drives or peripherals that “look” like hard drives to the CPU), throws Basilisk off.

Solution: If you have the problem that the Accordance CD is not showing up on the Mac desktop, start up the emulator by right-clicking and choosing “Run as Administrator.” Then when asked for permission to run the program, answer in the affirmative. This helps overcome those situations where the hardware is swapping the CD-Rom drive letter – it allows Basilisk to access whatever drive is actually the CD-Rom.

4. In one case the cdenable files were not installed by the Basilisksetup.exe. They cannot be manually installed in Vista.

Solution: In c:/accpc, open the “extra files” folder. Launch the application BII.exe. Once the application is running, you may need to minimize the My Computer window if that is the place from which you evoked the application. The BII.exe application is in a smaller window behind the My Computer window. In BII.exe window, click “next.” Then choose the radio button “custom” and click “next.” Uncheck all of the boxes except CD-Rom Drivers. Click next. It will show Basilisk II in the “program folders”, and Accessories under the folder “Existing folders”. Click next. It will install. Then click “Finish.” This should put the cdenable.sys in the Windows/System32/drivers folder, and cdenable.vxd at the root-level of the Windows/System32 folder. It may also write instructions to the registry.

Other Issues

Error 192 when running an Installer

Q: When I try to install my Accordance program and modules, or a downloaded updater, I get the error “The application program “(Name)” could not be opened, because an error of type-192 occurred.”

A: You have used the installer for the Power PC or for Macintosh OS X, rather than the 68K installer for the emulator. On the Accordance CD, you will find a folder named **for 68K Mac**. Open this folder, and use the installer inside this folder for installation on the emulator. On the website select the download for Classic/68K/PC Emulator.

Setting BasiliskII Preferences

Q: How Do I Use the BasiliskII Preference Window?

A: The BasiliskII Preference Window is the program you use to set up preferences for the emulator.

- You use this on the Windows side of your computer.
- You will find the file in the folder that has the rest of the emulator files. If you installed from the CD before Nov 2002, then it will be in a folder called Macintosh Stuff on your C: drive and it will also show up under your Start Menu\Programs\BasiliskIIGUI.
- If you installed with the newer CD dated Nov 2002 or later, it will be in a folder named **accpc** on your **C:** drive and unless you installed it yourself into the Start menu, it will not show up there.
- The Preference program file is named **BasiliskIIGUI.exe**. Double-clicking this will launch the tool, and the various tabs in the window will take you to the preferences for that item.
- Each tab in the window has several options for configuring the emulator. The most important are covered above, and others appear throughout these Troubleshooting Tips.
- When you have set the Preferences, click **OK**, or **Run** to launch the emulator directly.

Q: Where is the Manual for BasiliskII itself?

A: You can find **BasiliskII_Manual.pdf** in **C:\accpc\extra files**.

Downloading Updates

Q: I want to get the free updates from www.accordancebible.com.

A: See the instructions above for [downloading updates](#).

Toggling between Windows and Macintosh

Q: How can I switch between my Windows programs and the Macintosh emulator?

A: Pressing **<Alt+Tab>** allows you to cycle between all open applications.

- Be sure to start up an application or open a window in Windows before launching the emulator. If you launch the emulator before opening a Windows application, you will not be able to toggle between the two.
- If WinXP hangs when you use **<Alt+Tab>**, run BasiliskIIGUI.exe again. Click the **Screen** tab, and in the first drop-down box, choose **DirectX[in a window]** if you have plenty of video ram, or **DirectX[full screen]** if you have limited video ram – that should solve the problem.

Transferring Files between Windows and the Emulator

Q: How do I move files between the Macintosh system and the emulator.

A: You will use the **My Computer** portal on the Macintosh desktop:

1. Be sure you have [enabled the external file system](#). This installs a (My) Computer icon on the Macintosh desktop. Clicking this icon opens a window showing your Windows hard drive(s), so that you can navigate to any directory/folder, and even create folders.
2. We recommend creating a new folder on the **C:** drive and naming it **Accordance files** (if you have not already done so). You can copy and save various files to this location.
3. To get files from Windows into the Macintosh, simply drag or copy them to a designated place on your Windows hard drive and then open that location with My Computer on the Macintosh side.

4. To save files from the Macintosh to Windows, save or copy them to a designated location on your hard drive via **My Computer** on the Macintosh desktop. They will now be available on the Windows side. Icons may not show up in their native colors and pictures, because Windows does not recognize Macintosh icons, and visa versa. But the file will be there, and you can open it in the appropriate application.

See above for copying the PDF documentation to Windows, and saving text files or documents for printing. See note on the My Computer portal.

Transferring files from a Macintosh to the Emulator

Q: How can I transfer Accordance and other files from a Macintosh computer to my emulator?

A: There are several ways to do this:

- One way is to stuff the files you want to transfer with an old copy of StuffIt, then transfer them to the PC via an e-mail attachment or a Flash/Jump drive that is formatted for PC. In the emulator, copy the files to the Macintosh HD via **My Computer** and unstuff them. (Do not attempt to transfer unstuffed files as the emulator cannot read the Flash/Jump drive directly, and copying the files to Windows will make them unreadable by the emulator.)
- Another way to accomplish file transfers is to burn them onto a CD on the Macintosh using Mac and PC HFS Standard format. Insert the CD in your Windows machine, then launch the emulator and open it on the Macintosh Desktop. Drag the files to the Macintosh HD.

Transferring files from the Emulator to another Accordance

Q: How can I transfer my Accordance user files from the emulator to another installation of Accordance?

A: There is only one way to do this:

- You must stuff the files you want to transfer with DropStuff, then transfer them to Windows, and then to the other computer where they can be unstuffed. A suitably old copy of DropStuff is included with the latest emulator installer, and can be downloaded here: <http://www.accordancefiles1.com/products/StuffLite.sit>.

Reinstalling the Emulator

Q: I need to reinstall the emulator. Can I avoid reinstalling all my Accordance files, and losing all my work?

A: You may need or want to reinstall BasiliskII in order to use the latest version, or because the Macintosh OS seems to be corrupted. It IS possible to preserve your Accordance and other files to avoid needing to reinstall, by moving the file containing an entire virtual hard drive.

1. Make sure that all your Accordance files are on the second hard drive you created, and also copy to it the **Accordance Fonts** file from **OS Drive>System Folder>Fonts**.
2. Check the **Disk** tab in **BasiliskIIGUI.exe** and note the name and location of the second drive (default is **C:\accpc\New.HFV**).
3. Install the emulator using a DIFFERENT location or folder name than your current installation. If you are using **basilisksetup.exe** you should move or rename your C:\accpc folder otherwise it will be replaced.
4. Move or copy the **New.HFV** file containing the second drive from the old location to the new one.
5. Run the **BasiliskIIGUI.exe** in the new installation. In the **Disk** tab click **Browse**, navigate to and open the **New.HFV** in the new location. Complete the usual settings in BasiliskIIGUI.exe and run the emulator.
6. Your second drive should appear in the new emulator. Copy the Accordance Fonts file back to **OS Drive>System Folder>Fonts**.

7. When you are sure that everything is now working, you can delete the old installation (after removing any files that you may have saved in those folders).

Transferring Accordance from one Emulator Installation to Another

Q: Can I transfer my entire Accordance installation to a new computer?

A: Yes, by following these steps:

1. Copy the **C/accpc** and the **c/Accordance files** folders to the new computer's C drive.
 2. Set up the [shortcut to BasiliskII](#) in the desktop, and the [favorite for the Help](#) in the browser.
- Your Accordance should now be identical to the one on the old PC.

Enlarging or Deleting a Virtual Hard Drive

Q: Can I enlarge a virtual hard drive, or delete an unwanted drive?

A: You cannot change the size of an installed virtual drive, but you can create a new drive of the size you want, copy to it any files, and delete any unwanted drives.

1. Create a new drive of the required size up to 2000MB in the **Disk** tab of **BasiliskIIGUI.exe** (be sure to give it a different name and location from your current drives). You only need to make sure you have this amount of hard disk space available in the location where the Macintosh disk will reside. When you create a hard drive, it occupies the space and that space is not available to your Windows programs.
2. Initialize the new drive in the emulator. The name on the Macintosh has no relation to the Windows file that contains it.
3. Drag to the new drive any files you want to transfer (they will copy over). You must copy all the files from **OS Drive** if you plan to delete that drive.
4. Shut down the emulator, run **BasiliskIIGUI.exe** again, and in the **Disk** tab move the drives you no longer need from the left pane to the right. Be sure that the drive now containing the System Folder is the top drive in the **Installed disks** list.
5. Run the emulator to make sure that everything is working as you want it.
6. In Windows you can now navigate to the **accpc** folder and delete the .HFV files that you are certain you are no longer using.

NO to Virtual Memory

Q: Can I use Virtual Memory in the emulator?

A: Do NOT turn on Virtual Memory in the Memory Control Panel

It will corrupt your system and you will need to [reinstall](#) BasiliskII. The reason is that Virtual Memory in the Macintosh OS presumes the Macintosh OS is managing memory. Of course, on the emulator Windows is managing the memory, and Windows cannot handle Mac Virtual Memory.

Reducing CPU Power Usage

Q: What can I do about the emulator hogging all my CPU power (100%) on my super fast WinXP laptop machine?

A: Go to the BasiliskII Preference Window and click on the **Misc** tab.

In the miscellaneous preferences, check the **Start in low power mode** box, and enter **10** into the box marked "Milliseconds to sleep." You can leave the rest of the settings as they were.

This will hardly slow the emulator down (you won't notice much difference when using Accordance) and it will allow the idle thread to rest when you're not actually typing or using the mouse. This will also decrease the amount of time the CPU is processing for the emulator, and will make your laptop run cooler. (Thanks to Tim Goltz for this tip!).

Screen Problems

Q: My Screen is not showing colors! What do I do?

A: Go to the Apple menu (click on the Apple in the upper left corner) and choose Control Panels. Then choose Monitors. Click Colors. Close the windows.

Q: The colors are crude. How can I improve them?

A: Shut down the emulator and run BasiliskIIGUI.exe. Click the **Screen** tab, and beside **Colors** select **Thousands (16 Bit)**.

Q: Why is the Macintosh screen skewed diagonally and unreadable?

A: In the Screen tab of the BasiliskII Preferences (GUI), set the resolution for the emulator to the same resolution that is set for Windows (you can find the resolution settings for Windows in the Screen settings in the control panel).

Installing BAS Pictures

Q: I'm having trouble installing the new Biblical World in Pictures CD-ROM. How can I run it?

A: This particular graphics disk requires a lot of RAM to install.

1. Go to the BasiliskII Preferences (double click **basiliskIIGUI.exe** in the **C:\accpc** folder)
2. Click on the **Memory** tab. Increase the RAM size to 400.
3. Then install the disk. After installation, you can reset the RAM back to your original setting. (Thanks to Tim Goltz for this tip.)

Hint: It will be easier to simply do a manual install of the BAS Pictures module.

Hebrew Word Troubleshooting Tips

Q: How do I enable the Hebrew language in Office?

A: Do the following:

1. Click the **Start** menu>**Programs**>**Microsoft Office Tools** and select **Microsoft Office Language Settings**.



2. In the **Enabled Languages** area, enable Hebrew and follow the onscreen instructions.
3. After you have rebooted your computer and Hebrew is enabled, the paragraph direction marks are accessible in Word on the Formatting toolbar

If the above option is NOT available (Hebrew is not an available option) you must:

1. Open the **Start** menu>**Control Panel**.
2. In the Control Panel open **Regional**, and **Language Options**.
3. On the **General** tab, in the panel "**Language settings for the system**", select **Hebrew** (or Greek, or whatever other languages you need).
4. If **HEBREW** does not appear, click **Advanced**, and enable ALL of the Hebrew options there (there are several).
5. After you click **OK**, the Microsoft Office Language Settings will be available.

Note: Hebrew setup in Windows differs, depending on the operating system and Office package installed with your computer. If you need specific instructions for your computer, search for the phrase "right-to-left" in your Windows or MS Word online Help.

Q: Why does my toolbar look like this? I have the Hebrew enabled but I cannot see the **Right-to-Left Paragraph** icon.



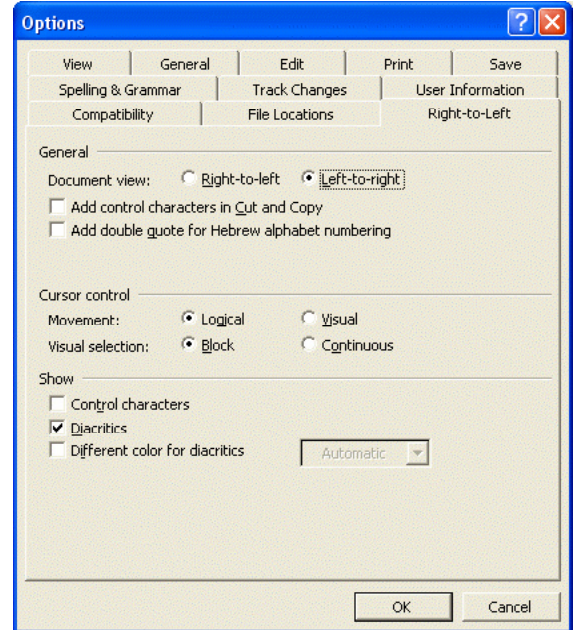
A: Word is displaying two toolbars together. The extra icons can be seen in a pop-up when you click the **arrow** icon at the far right.

You can show all the icons if you separate the toolbars at the point where they are joined, just to the right of the **help** icon. Drag the right toolbar down and below the left bar so it looks like this:



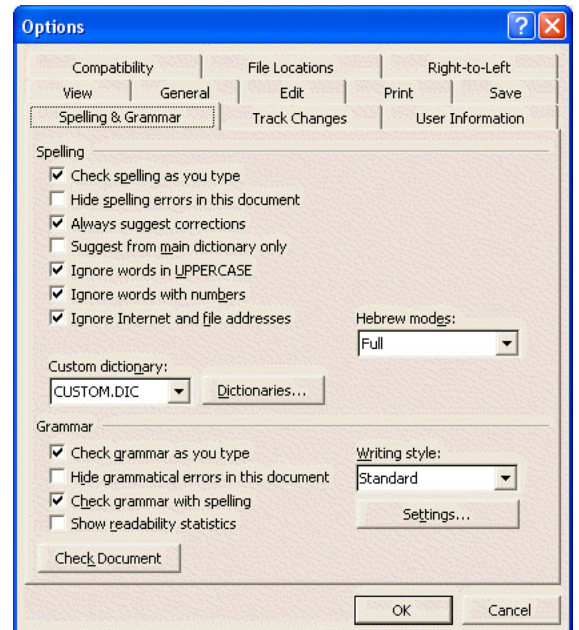
Q: Are there special options for using Right-to-Left in Word?

A: Yes, you can find them in **Tools** menu>**Options**>**Right-to-Left** tab.



Q: Can I suppress the spell checking squiggly line under each word?

A: Yes, in **Tools** menu>**Options**>**Spelling & Grammar** tab.



Q: How can I hide the funny characters on my page?

A: By clicking the **Show/Hide** button with the Paragraph symbol on the tool bar..

