



Accordance

Software for Biblical Studies

Timeline Supplement

for Version 5.6

Welcome to *Accordance*®

Accordance gives you a unique combination of the most powerful Bible study software available anywhere, together with a deceptively simple interface which is easy to learn and use.

Whether you are a new user or already familiar with *Accordance*, we recommend that you use the documents on the CD-ROM, and the *Accordance Help* and *Tutorial*, to get an overview of the features of the software.

This supplement to the User's Guide for 5.0 covers features of *Accordance* specific to the Timeline.

Technical support is provided by **OakTree Software, Inc.**

Website: www.OakSoft.com

Telephone: (407) 339-0266

Fax: (407) 339-9188

E-mail: Support@OakSoft.com

Accordance software by Roy B. Brown

Accordance manuals by Helen A. Brown

Special thanks to David Lang for his major contribution to the development of the *Accordance Timeline*.

This manual and the software described in it are copyrighted with all rights reserved. Under the copyright laws, neither this manual nor the software may be copied, in whole or in part, without the written consent of OakTree Software, Inc., except for disk backup purposes or as specified in a separate site license agreement, if applicable. Under the law, copying includes translation into another language or format, or transmission from one computer to another over a network.

© 2002 OakTree Software, Inc.

498 Palm Springs Drive, Suite 100

Altamonte Springs, FL 32701

Accordance is a registered trademark of OakTree Software, Inc., Helena, Yehudit, and Rosetta are trademarks of OakTree Software, Inc. Apple, LaserWriter, and Macintosh are registered trademarks of Apple Computer, Inc. System 7, OS 8, OS 9, and OS X are trademarks of Apple Computer, Inc.

The CD-ROM and manual are warranted to be free of physical defects for 90 days after you receive this product. If a defect is found within this 90 day period, return the defective item postage prepaid for a replacement.

This software has been thoroughly reviewed and tested and will be supported with periodic upgrades. However, except as specifically stated above, there are no other warranties, express or implied, regarding the enclosed product, its merchantability, or its fitness for any particular purpose. This software is sold "as is", and the purchaser assumes the entire risk as to its quality and performance.

APPLE COMPUTER, INC. MAKES NO WARRANTIES, EITHER EXPRESS OR IMPLIED, REGARDING THE ENCLOSED COMPUTER SOFTWARE PACKAGE, ITS MERCHANTABILITY, OR ITS FITNESS FOR ANY PARTICULAR PURPOSE. THE EXCLUSION OF IMPLIED WARRANTIES IS PERMITTED IN SOME STATES. THE ABOVE EXCLUSION MAY NOT APPLY TO YOU. THIS WARRANTY PROVIDES YOU WITH SPECIFIC LEGAL RIGHTS. THERE MAY BE OTHER RIGHTS THAT YOU HAVE WHICH VARY FROM STATE TO STATE.

Contents

Introduction

Chapter T1 **The Timeline Window**

The Pop-up Menus	T1-2
The Borders.	T1-3
The Details of the Items	T1-3
The Region Layers	T1-3
The Region Layer Pop-up Menu.	T1-4
The Item Layers	T1-4
The Item Layer Pop-up Menu.	T1-4
The Dates Pop-up Menu	T1-5
Moving Around the Timeline	T1-5
Finding an Item on the Timeline.	T1-6
Measuring the Timeline	T1-7
Other Window Features	T1-8

Chapter T2 **Amplifying to and from Timelines**

Item Details.	T2-2
Amplifying from the Details.	T2-3
Amplifying from the Timeline	T2-3
Viewing the Timeline Data	T2-4
Amplifying to the Timeline.	T2-5

Chapter T3 **Setting Timeline Display and Defaults**

Setting the Display of the Timeline Window	T3-2
Setting Defaults for New Timeline Windows.	T3-3

Chapter T4 **Defining Region Layers**

The Define Region Layers Dialog Box	T4-2
Defining the Layer	T4-3
Creating a New Layer.	T4-4

Chapter T5 **Defining Item Layers**

The Define Item Layers Dialog Box.	T5-2
Defining the Layer	T5-3
Creating a New Layer.	T5-4

Chapter T6 **Defining Custom Lists**

The Define Custom Lists Dialog Box.	T6-2
Selecting Items for the List.	T6-3
Creating a New List	T6-3

Contents

Chapter T7 **Defining User Items**

Define User Items Dialog Box	T7-2
Setting the Item Details.	T7-3
Creating a New Item	T7-5
Displaying User Items on the Timeline	T7-5
Deleting Items.	T7-5

Chapter T8 **The Timeline Dates**

Conservative Versus Critical Dates.	T8-2
Sources	T8-3
Notes on the Data	T8-3

Specific Keyboard Shortcuts for the Timeline

Index

Introduction

This supplement describes the features of the *Accordance Bible Timeline*. The Timeline displays the historical relationships between the events and people of the Bible, and the political background of the nations which wielded influence over the lands of the Bible. It is also fully integrated with all the Bible study features and modules which have made *Accordance* “easily the most advanced Bible study program on any platform.” See the *Accordance Catalog* for details of the range of *Accordance* CD-ROMs and modules.

Timeline features The Timeline lets you:

- create your own timelines from earliest history through the Byzantine period
- select the geographic regions and the scheme of dates
- add items such as people and events from a defined time period
- create Custom Lists with specific items
- define your own User Items
- click to select a time and produce a report of the events in that time
- find major Biblical events and people on the Timeline
- go and search for an item name in a Bible text or tool
- hypertext from the Scripture references for an item
- directly print any window, or copy the contents to another program

Contents The Timeline includes:

- A *Timeline data* file
- *Accordance Timeline settings* with prepared timelines, and *User Items* with examples
- This *Timeline Supplement* PDF file.

Getting help There are several sources of help. The *Accordance Tutorial* is an interactive introduction to the use of the software including the Timeline. It is highly recommended to help you get started. *Accordance Help* offers interactive help for all the features of *Accordance*. These Apple Help files can be opened from the **Help** menu within *Accordance*. (On OS 8.5 and lower, they will be placed in the *Accordance folder* and can be opened by any web browser.) Their use is described in the *Mini-Manual* and *User's Guide*. These two PDF files on any recent CD-ROM also cover the Bible study features of *Accordance* in detail. Current users of *Accordance* will find that they can use most features of the Timeline without any explanation. They should still check out the details of the Timeline window and the associated dialog boxes so that they do not overlook important points. New users will welcome the familiar Macintosh interface and intuitive design of *Accordance*, and should have no difficulty quickly becoming adept at exploring the Timeline.

Introduction

The Supplement Chapters T1 through T2 introduce the Timeline window and show you how to change the Timeline layers. Creating Timelines and linking the Timelines with text and tool modules are also described.

Customizing the Timelines is covered in Chapters T3 through T7— setting display and default options, and defining the different kinds of layers and items.

Chapter T8 discusses the dates used in the Timeline, and is followed by a list of the keyboard shortcuts used in this software.

IMPORTANT **Note:** The Timeline requires *Accordance 5.6* or higher.

Note: This document is a supplement to the *User's Guide* for *Accordance 5.0* which is available in hard copy and as a PDF file on the CD-ROM. Please first read the *Mini-Manual* or *User's Guide* in order to become familiar with the general features of *Accordance*.

T1



The Timeline Window

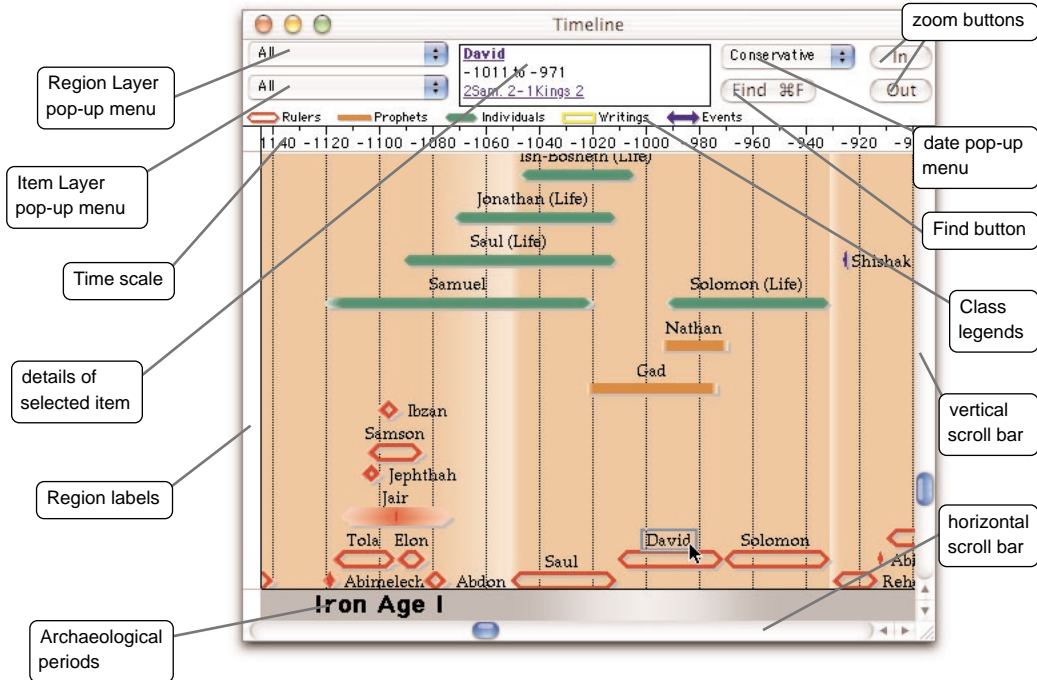
Chapter Contents:

- The Pop-up Menus
- The Borders
- The Details of the Items
- The Region Layers
- The Region Layer Pop-up Menu
- The Item Layers
- The Item layer Pop-up Menu
- The Dates Pop-up Menu
- Moving Around the Timeline
- Finding an Item on the Timeline
- Measuring the Timeline
- Other Window Features

T1 The Timeline Window



The Timeline is displayed in the Timeline window. To open this window click on the Timeline button in the **New Window** palette or select **Timeline Window** from the **New** submenu (**File** menu). The window opens centered on Israel around the time of King David.



The Pop-up Menus

The Timeline you see is composed of a layer of items (such as people, events, and writings) over a background layer of geographic regions and political periods. The pop-up menus at the top left let you change the current layers. The Timeline is supplied with a number of pre-defined layers. The default settings when you open a new window are supplied with the Timeline, but you can change them at any time.

The upper left pop-up menu shows the current Region Layer of the Timeline. The pop-up menu below it shows the Item Layer. For each type of layer you can select a different layer to display, or define (create or modify) a layer and choose its display characteristics.

There are many display options for the Timeline. *See Chapter T3 to change the display and default settings, and Chapters T4 to T7 for the details of customizing the layers themselves.*

The Borders

Three borders help to orient you on the Timeline:

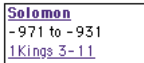
The **time scale** at the top shows the years. The minus signs indicate BCE or BC dates. This scale and the accompanying vertical grid adjust as you zoom in and out of the Timeline. Clicking in or selecting part of the scale creates a report on all the items currently showing for that time. (*See Chapter T2.*)

The **region labels** at the left identify the geographical regions with which the events and people are associated.

The **archaeological periods** at the bottom show the major cultural periods which apply to the entire area of the Bible lands.

The Details of the Items

Clicking on a name in the Timeline displays the following details about that item in the center top of the window.



Solomon
- 971 to - 931
1 Kings 3-11

- The name of the item and any alternative name
- The beginning and ending dates for the item (*see Chapter T2*)
- The Scripture passages mainly associated with that item.

Clicking on a name in the details (or double-clicking on the name in the Timeline) opens the default English tool to the article on that name. Clicking on a Scripture reference in the details opens the default Bible text to that reference. *Chapter T2* covers the amplify features which enable you to move easily between your *Accordance* text and tool modules, and the Timeline.

Class legends The legend underneath the pop-up menus and buttons shows the markers for each currently displayed class of items.

The Region Layers

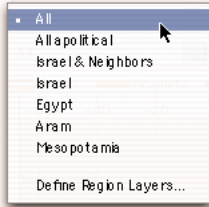
The Timeline allows you to define different Region Layers. Choose another layer from the pop-up menu to display its regions.

The major geo-political regions appear as a horizontal bands across the Timeline, labeled in the border on the left. Each region has a light colored background. The height of the band varies depending on the number of items currently displayed in that region.

In some places regions are divided horizontally into subregions. These represent divisions of political power within the main region, such as Israel and Judah during the period of the divided kingdom. *See Chapter T7 for details of the subregions.*

T1 The Timeline Window

Political periods Political periods such as dynasties or empires appear as blocks of more intense colors, either one color for all political periods, or each in the color of the region with which they are associated. The latter option helps to illustrate the influence of one region over another. If the period is too narrow to display its full name, it is shown with an ellipsis...



The Region Layer Pop-up Menu

This pop-up menu is divided into two sections:

The top section shows the Region Layers which have been defined on the basis of the criteria in the database. For example, **Israel & Neighbors** includes the regions of Israel/Palestine and the adjacent regions, Egypt, Syria, and Mesopotamia.

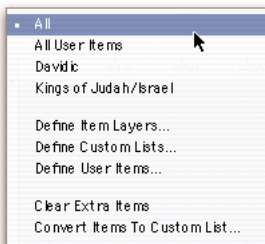
Note: If the Timeline window is not displaying any items, it may be that none of the items in the current Item Layer belong to the regions shown in the current Region Layer.

The **Define Region Layers...** item at the bottom allows you to create or modify layers. You can define the regions to be displayed and their colors, as well as set the display of the political periods. *See Chapter T4.*

The Item Layers

The Timeline also allows you to define different Item Layers. Choose another layer from the pop-up menu to display its items. Each Item Layer displays the selected items with markers and labels that have been defined for that layer. There are five classes of items that can be included in the layer: **Rulers**, **Prophets**, **Individuals**, **Writings**, and **Events**. Each class uses a distinctive marker to show the length of time associated with its items, such as the reign of a ruler, or the life of a person. The color shading at the ends of the markers indicates the range of uncertainty of the begin and end dates.

You can define your own layers by selecting a list of items and the classes of items *as described in Chapter T5*. That chapter also shows you how to vary the markers for each class of item as well as the style of the labels.



The Item Layer Pop-up Menu

This pop-up menu has three sections:

The first section displays the Items Layers which have been defined with specific display characteristics. Selecting a layer displays its items on the current Timeline. If no items would be visible in the window, the Timeline will scroll to display the closest items.

The three items in the second section allow you to customize the layers. **Define Item Layers...** lets you specify which items are included in the layer and how they are displayed. **Define Custom Lists...** lets you create a list of specific items which can be displayed in a layer. **Define User Items...** lets you define and add new items such as events and people that are different from the items included in the database. See *Chapters T5, T6 and T7*.

The lowest section is dimmed until you have displayed individual items using the **Find** button, or by amplifying to the Timeline from a text or tool. **Clear Extra Items** removes all these items, and **Convert Items to Custom List...** removes the items, and opens a dialog box with the extra items included in a new Custom List.

The Dates Pop-up Menu



The pop-up menu to the top right of the Timeline window lets you choose between two sets or schemes of dates for Biblical events: **Critical** or **Conservative**. These two schemes and the authorities upon which they are based, are described in *Chapter T8*. Some items appear the same in both schemes, but others appear in only one scheme because no dates can be assigned to them in the other.

Of course, many different schemes of dates have been proposed for the Biblical events, but we have simplified the choices to the two most accepted alternative schemes.



Moving Around the Timeline

The scroll bars on the left and bottom let you scroll throughout the Timeline. Holding down the *command* key () changes the cursor to a grab hand which lets you click the mouse and drag to scroll the Timeline in any direction. Pressing the *command* key while pressing any of the four *arrow* keys scrolls the window in that direction.

Changing the magnification

Clicking the **In** and **Out** buttons on the top right lets you zoom to greater or lower magnifications. The time scale across the top adjusts to match.

Holding down the *shift* key while clicking a button increases the zoom by a factor of four. If you click and hold the mouse over the button, the zoom action is repeated.

You can also zoom in by selecting and double-clicking in an area of the Timeline as described below.

Holding down the *option* key while clicking the **Out** button lets you quickly zoom out so that most of the Timeline is visible in the window.

T1 The Timeline Window

As you zoom out, widen the window, and scroll to the right you can view the empty Timeline stretching into the future. However, the left margin of the window does not advance past the year 2000.

Finding an Item on the Timeline

The **Find** button (or pressing -F with the Timeline window in front) opens a dialog box which lets you find and display a specific item:

You can enter a Bible name or event, or pick it from the list. The item will be added to the Timeline if it is not currently showing, the Timeline will zoom, and if necessary, an additional region will be added in order to display the item. (An asterisk will appear beside the Region Layer on the pop-up menu.)



The list of names

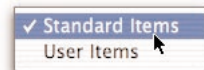
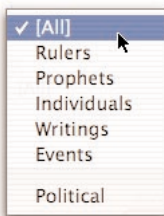
The scrolling list shows the item names in the Timeline in alphabetic order. This includes the political periods shown in the Region Layer and the five classes of items shown in the Item Layer. The list displays only the items that are appropriate for the date scheme currently selected in the window. Each name on the list is unique, so a qualifier is added to distinguish, for example, a person's life from his reign, or the person from the book. If there is an alternate name for a person, it appears after the main name, separated by a comma.

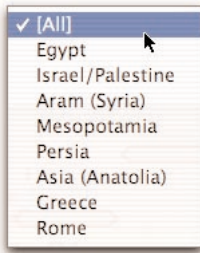
Options in this dialog box

To find a name on the Timeline in the front window, select the name in the list and click **OK**, or simply double-click on the name. The Timeline scrolls and zooms to center on the name. Repeat these steps to find additional names.

In the Find dialog box you have the following options:

- Selecting **User Items** instead of **Standard Items** above the scrolling list switches the list to the items that you have added to the Timeline.
- Typing the first letters of the name in the **Go to:** box scrolls the list to that part of the alphabet.
- Selecting an item class from the **Item** pop-up menu labeled **Select:** limits the items in the list to that class. *The item classes are described in Chapter T4 and T5.*





- Selecting a geographic region from the **Region** pop-up menu labeled **in:** limits the items in the list to those which belong to that region. *The regions are described in Chapter T4.*
- *Shift*-click selects all the items between the previous and new selection, and *shift-command*-click selects the new item in addition to the previous item(s).
- The **Cancel** button closes the dialog box without showing the selected name on the Timeline.

The dialog box initially opens with all the Standard Items showing in the list, and **[ALL]** in the **Items** and **Regions** pop-up menus. It preserves the current settings when you close and reopen it.

Display of added names

The names added to the Timeline appear in the default font and styles for “extra” items. If the name was already displayed in the Timeline, its display changes to this default. Selecting **Set Timeline Display...** (**Options** menu or -T) lets you change the display of these extra items (*see Chapter T3*).

Adding and deleting names

You can continue to accumulate items as you use the **Find** button. Once you have added or found items you can delete an individual item by selecting it and pressing the *delete* key. If the item was already showing in the Timeline, its display reverts to that of the layer.

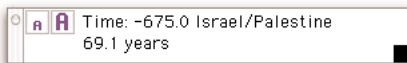
You can also remove all the extra names at once by selecting **Clear Extra Items** from the **Item Layer** pop-up menu. Selecting **Convert Items To Custom List...** (**Item Layer** pop-up menu) removes the extra names and creates a new Custom List with all the names you found. You can modify this layer *as described in Chapter T5*.

Measuring the Timeline

The **Instant Details** box below the Timeline window displays the date and the region of the current position of the cursor.

Distances between points

To measure time spans between points on the Timeline, hold down the *option* key so that the cursor changes to a plus sign, and click on the first point. As you move the cursor to the left or right, a line is drawn over the Timeline, and the distance from the first point is shown in the second line of the Instant Details box. (If it is not already open, this floating window opens automatically when you *option-click* in the Timeline.) Releasing the *option* key ends the measuring mode.



Other Window Features

- Selecting an area** To select a specific area of the Timeline, drag the cursor to define a box (marquee) around the area. To zoom into the area, double-click inside the marquee. You can print the area by choosing **Print Selection** (**File** menu). To copy the selection to the clipboard, choose **Copy Picture Selection** (**Edit** menu or **-C**). You can now paste the picture into another program such as a word processor or drawing program.
- If there is no selection in the window, **Copy Picture** (**Edit** menu or **-C**) copies the entire Timeline area currently showing in the window, together with the borders, so that you can paste it into another program.
- Selecting a name** To select a name simply click on the name. The selection is indicated by a box around the name. The selected name can be used to amplify to any text or tool as described in the next chapter, or copied by selecting **Copy Name** (**Edit** menu or **-C**). Details about the item appear in the top center area of the Timeline window as described above. Pressing *option* when selecting **Copy Name** copies the item details to the clipboard.
- Saving** When you save the Timeline window by selecting **Save** (**File** menu or **-S**) the window is saved with the current pop-up menu settings, display settings, extra sites, and window position. If you reopen this window it will appear exactly the same as when you saved it.
- Printing** The Timeline window can be printed as it appears on the screen by selecting **Print...** (**File** menu or **-P**) or **Print Selection**.
- Note:** A Timeline window will often print over more than one page. To print on one page you can:
- Shrink the size of the window using the Grow box in the lower right corner.
 - Choose “landscape” orientation in the **Page Set Up**.
 - Reduce the margins in the **Printing** options when you select **Set Preferences...** (**Edit** menu or **-**).
 - Be aware that if your screen is set to display a large number of pixels, the Timeline appears smaller on the screen than it does when printed.
- Hint:** To see how a Timeline window will look when printed in grayscale, you can set the monitor to display grays.
- Setting optional display items** Various display options are available and can be set individually for the current Timeline window, or as defaults for future new Timeline windows. *These settings are described in Chapter T3.*
- Other features** Features common to most windows are described in the *User's Guide* and *Mini-Manual*. These include opening and rearranging windows.

T2



Amplifying to and from Timelines

Chapter Contents:

- Item Details
- Amplifying from the Details
- Amplifying from the Timeline
- Viewing the Timeline Data
- Amplifying to the Timeline

T2 Amplifying to and from Timelines

Accordance uses the term “amplify” to refer to the use of the **Amplify** menu or palette to access more information about a selected word, phrase, or verse reference. In general you can simply select the word by clicking in it, double-clicking, or dragging the mouse. Then select the specific Amplify function. In most cases a new window opens (or an appropriate window recycles) with the expanded information.

The various Amplify features are described in detail in the *Accordance Mini-Manual* and *User’s Guide*, as well as *Accordance Help*. This chapter covers the features that relate to the Timeline.

Item Details

Clicking on a name in the Timeline displays details about that item in the center top of the window *as described in Chapter T1*. The name of the item, and the alternate name if any, are shown in blue underline, except for events.

Date formats

The dates may appear in different formats. The **Set Timeline Display** dialog box (*see Chapter T3*) lets you select between three options for identifying the dates: **None**, which displays dates using the minus sign only (like the time scale), and the suffixes **BC/AD** or **BCE/CE**.

Dates may also have different kinds of uncertainty:

A single date implies a short event in a known year.

A simple range of dates such as **-450 to -430** means a longer item with definite dates.

Circa (abbreviated as ca.) besides a date connotes a small degree of uncertainty as to the exact date. Thus **ca. -450** means about 450 BCE.

A range at one or both ends of the item, such as **-450-440 to -430-425** implies that the item begins anywhere from 450 to 440 BCE and ends anywhere between 430 and 425.

Slashes between dates imply alternatives, so that **-450/440 to -430/425** means that the item begins either in 450 or 440 BCE and ends either in 430 or 425.

Parentheses with a number of years show the known duration of the item even when the beginning and end may be uncertain. Thus **-450-440 to -430-420 (20 years)** means that the item started anywhere from 450 to 440 BCE and lasted for 20 years.

Between followed by a range, such as **between -450 and -430** means that the item falls anywhere in the range and is of uncertain length.

<u>Abimelech</u> ca. -1120 to -1117 (3 years) <u>Judg. 9</u>
--

Amplifying from the Details

Clicking on a name in the details opens the default English tool such as a Bible Dictionary and searches it for that name. When applicable, there is a Bible reference under the dates, and clicking this reference opens (or recycles) a Text window and displays the entire reference.

If the reference is not found in the default Bible text, or in the Bible text showing in the open Text window, a blank window appears. You can select another text in the **Text order:** pop-up menu if necessary to display the reference. For example, if the reference is to a book in the Apocrypha, and the default text is the KJV, selecting the KJVA (King James Apocrypha) will display the verses when you click the reference again.

Amplifying from the Timeline



You can also select any name on the Timeline, and choose a Bible text or tool (or the **Search All**) from the **Amplify** menu or palette. *Accordance* automatically searches the text or tool for the selected name, and opens a new window to display the results. The window is recyclable, so it will be used again if a search is performed in the same module.

Amplify shortcuts

Double-clicking on a name on the Timeline automatically amplifies to the default English dictionary. You can choose this tool for the current Timeline window or all Timeline windows *as described in Chapter T3*.

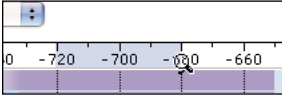
Holding down the *shift* key while you double-click amplifies to the first Tool Set in the list. You can use **Define Tool Set...** in the **Tool sets** pop-up menus to define and organize your tool sets. Pressing the *control* key while double-clicking opens the English tool last selected from the pop-up menu (or tool set in combination with the *shift* key).

The name as a search criteria

The name is searched as it appears on the Timeline. Thus if you select an event description on the Timeline, you may not find that exact phrase in any text or tool.

T2 Amplifying to and from Timelines

Viewing the Timeline Data



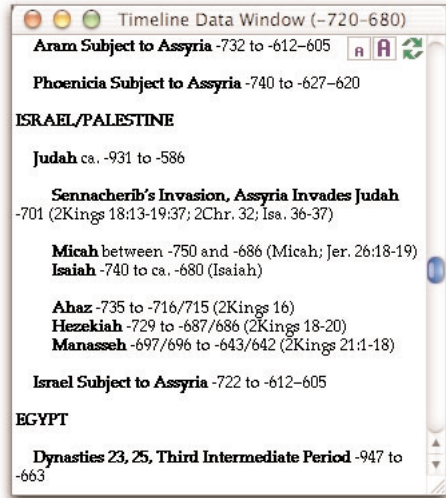
When the cursor is over the time scale it changes to a magnifying glass. Clicking in the time scale, or clicking and dragging to select a section of the scale, creates a report on all the items displayed for that period of time.

The report appears in a recyclable Timeline Data window with the date period in the title.

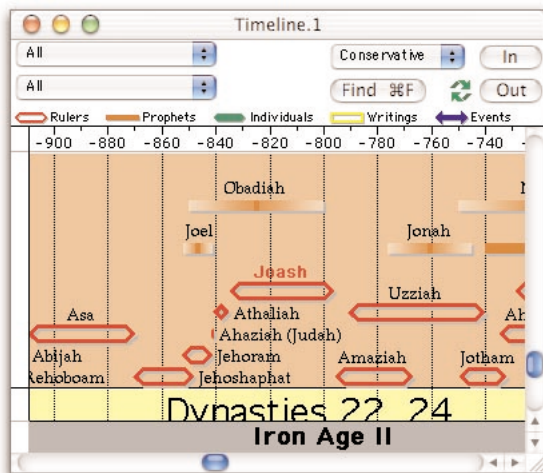
The items are displayed by region and political period, then organized alphabetically within each class of item. Only regions and items currently showing in the window appear in the data.

Each item is followed by the same information that is shown in the details area of the Timeline window. The hypertext links do not appear in this window, but you can select a name or verse reference and amplify to any text or tool in the Amplify palette, or to the Map or Timeline.

The display of the dates and the fonts are those currently used in the Timeline window. There are no optional settings, but the **Text size** buttons let you reset the font size in the window itself. The display of the dates can be set *as described in Chapter T3*.



Amplifying to the Timeline



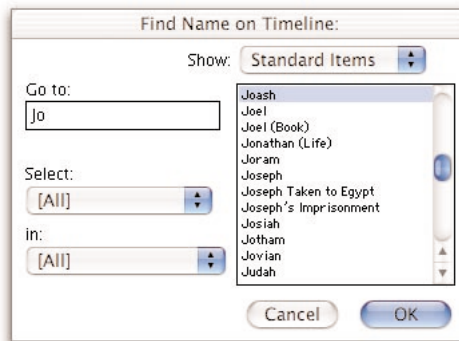
To find on the Timeline any name you see in a Bible text or tool, select the name and click on **Timeline** in the **Amplify** palette, or choose **Timeline** from the **Selection** submenu (**Amplify** menu).



A new Timeline window opens displaying that name. This window displays the green recycle symbol so that it will be used again if you leave it open and amplify again to Timeline. In this way you can display a series of names from the text or tool. You can change any of the pop-up menu settings just like any other Timeline window.

If the name occurs at the beginning of more than one item on the Timeline, for example

Solomon and Solomon (Life), all the items are displayed. Alternate names for certain items (such as Abram for Abraham) find the items but do not display the alternate name. Use the **Find** button to find a specific name by looking at the complete names in the list. *See Chapter T1* for a description of the Find dialog box.



The extra names are displayed and function in the same way as those found by the **Find** button on the Timeline window. You continue to accumulate names unless you remove them by selecting **Clear Extra Timeline Items** (**Item Layer** pop-up menu). Selecting **Convert Items To Custom List...** (**Item Layer** pop-up menu) creates a new Custom List which you can modify as described in Chapter T6. Individual extra names can be removed by selecting a name and pressing the *delete* key. Selecting **Set Timeline Display...** (**Options** menu or **-T**) lets you change the display of these extra sites and region names (*see Chapter T3*).

T3



Setting Timeline Display and Defaults

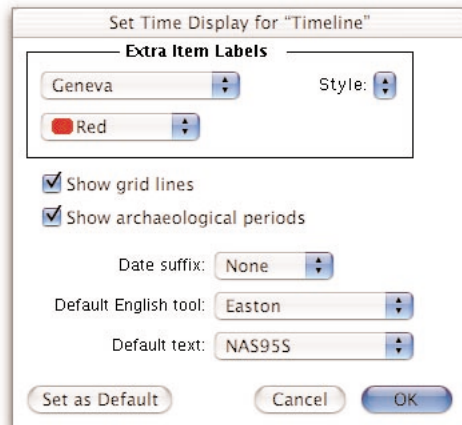
Chapter Contents:

Setting the Display of the Timeline Window
Setting Defaults for New Timeline Windows

T3 Setting Timeline Display and Defaults

Setting the Display of the Timeline Window

When a Timeline window is open and in the front of the screen, selecting **Set Timeline Display...** (**O**ptions menu or **-T**) lets you customize certain options which affect the display of the Timeline. The dialog box includes the label details for extra items on the Timeline, as well as other options.



Label details

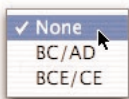
The **Extra Item Labels** area lets you set the appearance of items which you display on the Timeline when you use the **Find** button or amplify to the Timeline from another module. The **font**, **Style** and **color** pop-up menus are self-explanatory. The word **Style** is shown in the currently selected styles.

Other options

The **Show grid lines** check box lets you show or hide the vertical grid on the Timeline.

The **Show archaeological periods** check box lets you show or hide the lower border of the Timeline.

The **Date suffix** pop-up menu sets the display of the dates in the details area of the Timeline window, and in any Timeline data window derived from it. The options are illustrated with an example date:



None displays dates using the minus sign only: **-20-15 to 10-15**

BC/AD displays dates using the conventional notation: **20-15 BC to 10-15 AD**

BCE/CE displays dates using the alternative notation: **20-15 BCE to 10-15 CE**

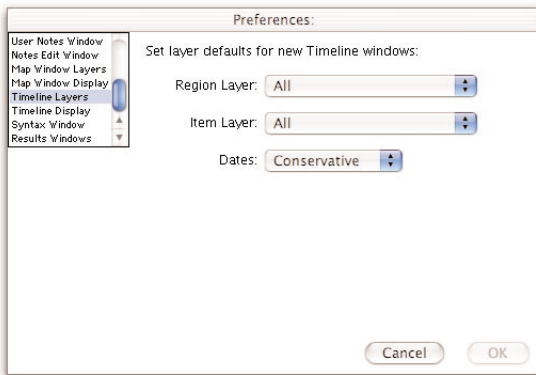
The **Default English tool** pop-up menu lets you set which tool is opened when you double-click on a name on the Timeline, or click the name in the details area. Any English tool can be selected, such as the *Easton's*, *Eerdmans Bible Dictionary*, or *Anchor Bible Dictionary*. These modules are available on various *Accordance* CD-ROMs. The **Default text** pop-up menu lets you set which Bible text is opened when you click on a reference in the details area.

Clicking the **Cancel** button closes the dialog box without saving ANY changes. Clicking **OK** saves ALL changes and applies them to the front Timeline window. Clicking **Set as Default** makes these settings the default for future new Timeline windows. An intermediate dialog box asks you to confirm that you do want to make these settings the default.

Setting Defaults for New Timeline Windows

Selecting **Set Preferences...** (**Edit** menu or **-'**) opens a dialog box with many default settings for each type of window. Scroll down the list in the upper left and click on **Timeline Layers** to display this dialog box:

Timeline layers

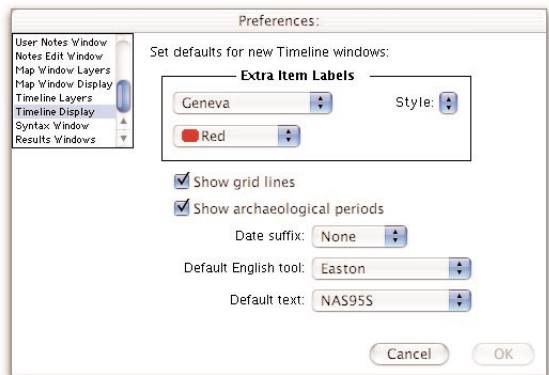


The pop-up menus let you set the Region Layer and Item Layer as well as the Dates pop-up menu. You can choose which layers are displayed whenever you open a new Timeline window, whether from the **New** submenu (**File** menu), **New Window** palette, or by amplifying from another module.

Clicking the **Cancel** button closes the dialog box without saving ANY changes. Clicking **OK** saves ALL changes in any of the preference dialog boxes and applies them to new windows.

Timeline display

The **Timeline Display** preferences are identical to those described above in the Set Time Display dialog box, except that they apply only to new Timeline windows, not to any currently open windows.



T4

Defining Region Layers

Chapter Contents:

The Define Region Layers Dialog Box

Defining the Layer

Creating a New Layer

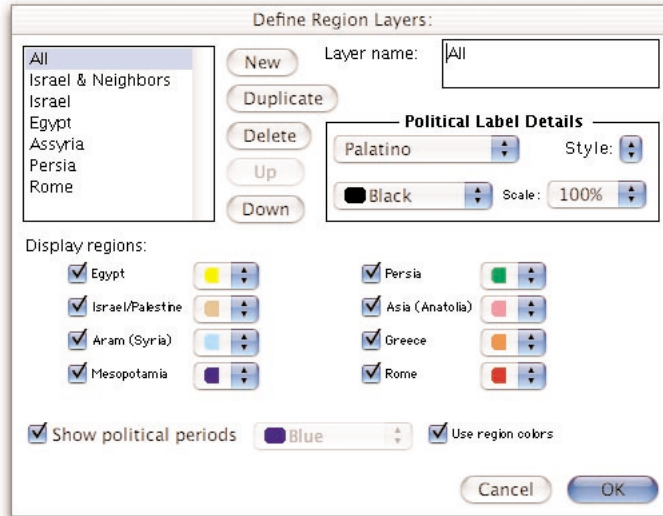
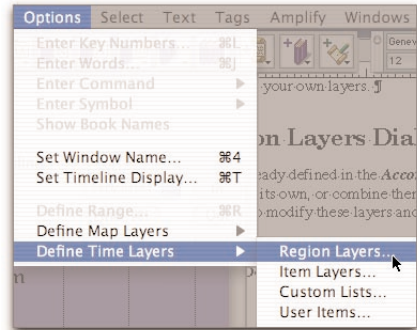
T4 Defining Region Layers

The *Accordance Timeline* comes supplied with a number of Region Layers which you can display as they are or modify. This chapter shows you how to modify these layers and create your own layers.

The Define Region Layers Dialog Box

Several Region Layers are already defined in the *Accordance Bible Timeline*. This section shows you how to modify these layers and to create your own layers.

Selecting **Define Region Layers...** from the **Region Layer** pop-up menu, or **Region Layers...** from the **Define Time Layers** submenu (**Options** menu) opens this dialog box:



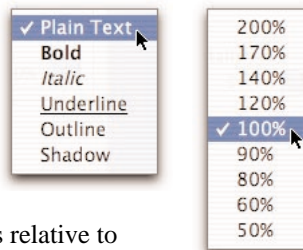
This dialog box lets you select a Region Layer and set the display characteristics of the layer. You can create a new layer which can be displayed in any Timeline window, or modify an existing layer.

The scrolling list in the top left shows the layers which have already been defined and are available in the pop-up menu. The layer last selected when the dialog box was closed, is also selected when it is reopened. Clicking on the name of a layer displays its definition in the dialog box. The **Duplicate** button makes a copy of the selected layer. The **Delete** button removes the layer from the list, the **Up** and **Down** buttons move the layer name. This lets you rearrange the names on the list, and on the **Region Layer** pop-up menu.

Layer name The name of the layer is displayed and can be edited in the top right text box labeled **Layer name**:

Defining the Layer

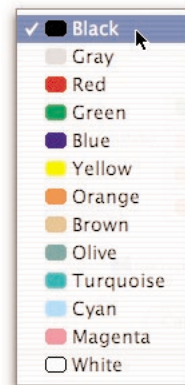
Political labels The **Political Label Details** area is dimmed unless the **Show political periods** check box is checked. These pop-up menus let you set the appearance of the labels for these periods. The **font**, **Style** and **color** pop-up menus are self-explanatory. The word **Style** is shown in the currently selected styles. The **Scale** pop-up menu sets the sizes of these names relative to other names.



Selecting regions The **Display regions**: check boxes let you select the geographical regions to be displayed in this layer. When a region is checked you can set the background color of the region in the Timeline.

Hint: Choose white backgrounds when printing in black and white.

Political periods Checking the **Show political periods** check box displays the political periods such as empires and dynasties. When the **Use region colors** check box is checked, each period is displayed in the color associated with the region (but more intense). For example, if Persia is shown in green, the period of Persian domination around -500 to -400 appears as a dark green band across most of the other regions. If the region colors are not used, the color pop-up menu sets a uniform color for all these periods.



T4 Defining Region Layers

The political periods form a special class of items in the Timeline. Their display is set in this dialog box, rather than in the Define Item Layer dialog box, because they appear as backgrounds to the other items, and in the colors of the regions. However, in other ways they function like the other classes of items:

- They can be added or found in the Find dialog or by amplifying to the Timeline (*see Chapter T2*).
- They appear only within the range set in the Define Item Layer dialog box (*see Chapter T5*).
- They can be selected for inclusion in a Custom List (*see Chapter T6*).
- They can be defined as User Items (*see Chapter T7*).

Saving changes Clicking **OK** closes the box, saves all changes you have made, and displays the selected layer in the front Timeline window. Clicking **Cancel** closes the dialog box without saving any changes.

Returning to the dialog box Pressing *command L* (*-L*) re-opens the last Define dialog box used for the front Timeline window. This allows you to view the layer you just created and then go back to edit it again.

Creating a New Layer

To create a new Region Layer, click the **New** button. [**New name**] is added to the list and the **Layer Name:** text box. To remove the new layer click **Delete**. Select the regions and the display details of the layer, and click **OK** to see your layer displayed on the Timeline.

Use the **Duplicate** button to create another layer with the same settings as the previous layer, and then change some of the settings. For example, you may wish to create layers that all use the same colors for specific regions, but omit some of the regions or the political periods.

T5



Defining Item Layers

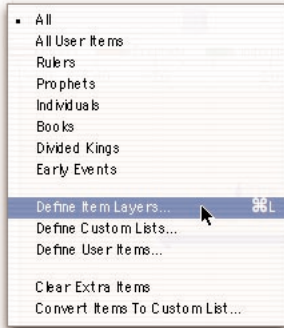
Chapter Contents:

The Define Item Layers Dialog Box

Defining the Layer

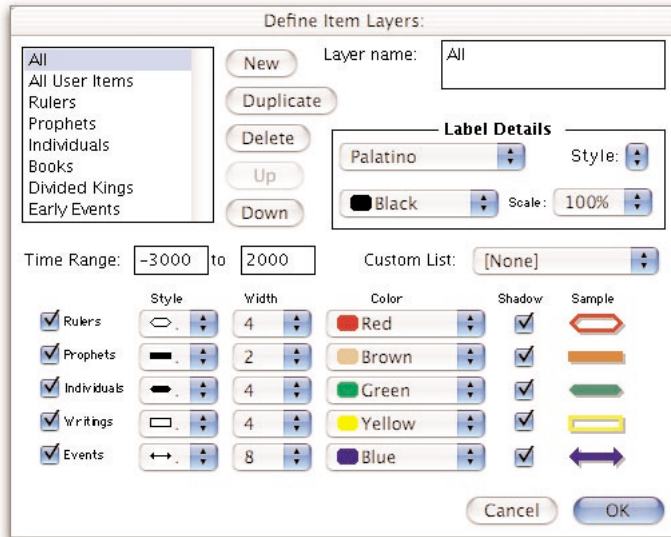
Creating a New Layer

The Define Item Layers Dialog Box



Several Item Layers are already defined in the *Accordance Timeline*. This section shows you how to modify these layers and to create your own layers.

Selecting **Define Item Layers...** from the **Item Layer** pop-up menu, or **Item Layers...** from the **Define Time Layers** submenu (**Options** menu) opens this dialog box:



This dialog box lets you pick the classes of items, and set the display characteristics of each class. You can create a new layer which can be displayed in any Timeline window, or modify an existing layer.

The scrolling list in the top left corner shows the layers which have already been defined and are available in the pop-up menu. The layer last selected when the dialog box was closed, is also selected when it is reopened. Clicking on the name of a layer displays its definition in the dialog box.

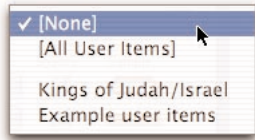
The **New** button creates a new layer and adds [**New name**] to the list and the **Layer Name** text box. The **Duplicate** button makes a copy of the selected layer. The **Delete** button removes the layer from the list, the **Up** and **Down** buttons move the layer name. This lets you rearrange the names on the list, and on the **Item Layer** pop-up menu.

The name of the layer is displayed and can be edited in the top right text box.

Defining the Layer

Label details You can use the items in the Label Details area to set the display of the labels of ALL the items in the layer. The **font**, **Style**, and **color** pop-up menus are self-explanatory. The word **Style** is shown in the currently selected styles. The **Scale** pop-up menu sets the relative sizes of the labels.

Other options The other options determine which items will be included in the layer. The **Time Range**: boxes let you enter the period of time to be displayed. The range limits are -3000 to 2000. All the items, including political periods and User Items, are displayed only if they fall within this range.



The **Custom List**: pop-up menu lets you choose between **[None]** which uses the standard list of items supplied with the Timeline, **All User Items** which displays the political periods and all the User Items you have created, and any Custom Lists of items which you may have defined (*see Chapters T6 and T7*). A Custom List can include selections from the standard list of items and from the current list of User Items. You can create several Custom Lists and display them in different Item Layers.

Classes of items The check boxes beside the five classes of items let you select each class for inclusion in the layer: **Rulers**, **Prophets**, **Individuals**, **Writings**, and **Events**.

Rulers include the reigns of kings, judges, pharaohs, and emperors etc.

Prophets include those who wrote prophetic books, and those like Elijah who did not, and display their period of activity.

Individuals show the life span of important people, including rulers.

Writings indicate the probable date of authorship.

Events include all other kinds of noteworthy historical events.

For each class you can select a different display for the marker that shows the length of time associated with that item, such as the reign of a ruler, or the life of a person. The options include the **Style**, **Width**, **Color**, and **Shadow**, and the resulting combination is displayed in the **Sample** column.



Saving changes Clicking **OK** closes the box, saves all changes you have made, and displays the selected layer if the front window is a Timeline window. Clicking **Cancel** closes the dialog box without saving any changes.

Returning to the dialog box Pressing *command L* (-L) re-opens the last Define dialog box used for the front Timeline window. This allows you to view the layer you just created and then go back to edit it again.

T5 Defining Item Layers

Creating a New Layer

Click the **New** button to create a new layer. [**New layer**] is added to the list and the **Layer Name** text box. To remove the new layer click **Delete**. Enter a name for the layer, select a list of items, set the time range, and check the boxes of the classes you want to display. Set the display details of the markers for each class, and the labels, and click **OK** to see your layer displayed on the Timeline.

Use the **Duplicate** button to create another layer with the same settings as the previous layer, and then change some of the settings. For example, you can set the display of the markers for all the classes of items, then duplicate the layer and hide some classes, or use a Custom List without having to reset all the display options.

T6



Defining Custom Lists

Chapter Contents:

The Define Custom Lists Dialog Box

Selecting Items for the List

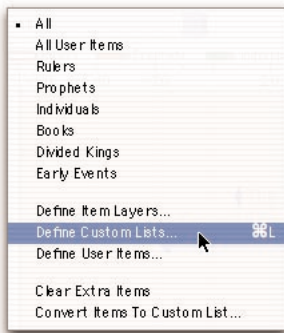
Creating a New List

T6 Defining Custom Lists

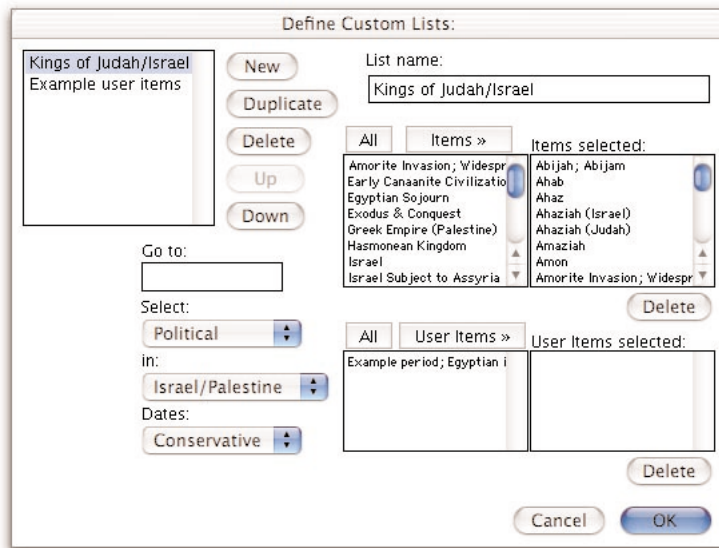
Accordance allows you to create and edit Custom Lists of items to select in an Item Layer for display in the Timeline. The List can be any combination of items from the default list supplied with the Timeline, and user items which you have created yourself (*see Chapter T7*).

This feature allows you to customize exactly which items appear on the Timeline. For example, you can include all the default items and add a few User Items, you can remove some default items and replace them with your own versions, or you can make a List with just a few selected items to demonstrate a particular point.

The Define Custom Lists Dialog Box



Selecting **Define Custom Lists...** from the **Item Layer** pop-up menu, or **Custom Lists...** from the **Define Time Layers** submenu (**Options** menu) opens this dialog box:



The scrolling list in the top left corner shows the Lists which have already been defined and are available in the Custom List pop-up menu in the Define Item Layer dialog box. The List last selected when the dialog box was closed, is also selected when it is reopened. Clicking on the name of a List displays its definition in the dialog box.

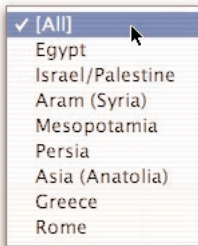
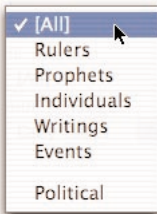
The name of the List is displayed and can be edited in the top right text box.

The **New** button creates a new List and adds [**New name**] to the list and the **List name** text box. The **Duplicate** button makes a copy of the selected List. The **Delete** button removes the List from the scrolling list, the **Up** and **Down** buttons move the Custom List on the scrolling list. This lets you rearrange the names on the list, and on the **Custom List** pop-up menu in the Define Item Layer dialog box

Selecting Items for the List

The other options allow you to select the items for the Custom List.

There are two pairs of scrolling lists of items, each in alphabetical order. The upper left list under two buttons labeled **All** and **Items** shows the standard list of items, and the upper right list labeled **Items selected:** shows which items have been selected from that list. The lower left list under two buttons labeled **All** and **User Items** shows the current list of User Items, and the lower right list labeled **User Items selected:** shows which items have been selected from that list.



The **Go to:** text box lets you enter one or more letters to scroll both lists to that part of the alphabet.

You can filter both lists of items using the pop-up menus below the **Go to:** box. This area is very similar to the **Find** dialog box. Selecting a class of items from the pop-up menu labeled **Select:** limits the items in both lists to those which belong to that class. Selecting a geographic region from the pop-up menu labeled **in:** limits the items in both lists to those which belong to that region. Selecting **Conservative** or **Critical** from the pop-up menu labeled **Dates:** limits the items in the top list to those which are appropriate for those dates.

You can add an item to a list of selected items by double-clicking on its name in the left list, or by selecting the name and clicking the **Items»** button. The next item on the list is selected after you click the **Items»** button. Clicking **All** adds all the items currently showing in the list. To remove the currently selected items in an **Items selected:** list, click **Delete** in the button below it.

In all four scrolling lists you can *shift*-click to select a range of items, or *shift-command*-click to select multiple individual items.

Note: The political periods are items on the standard list, so that if you do not add these to your Custom List, there will be no periods displayed in the background, even if the current Region Layer is set to show the political periods. You can add all these periods by selecting **Political** in the **Select:** pop-up menu, then clicking **All** above the upper left box.

Clicking **OK** closes the box and saves all changes you have made. Clicking **Cancel** closes the dialog box without saving any changes.

T6 Defining Custom Lists

Creating a New List

Click the **New** button to create a new Custom List. [**New name**] is added to the list and the **List name** text box. To remove the new List click **Delete**. Enter a name for the List and select the items that belong to it. Click **OK** to close the dialog. You will also need to define an Item Layer to display the items included in your Custom List.

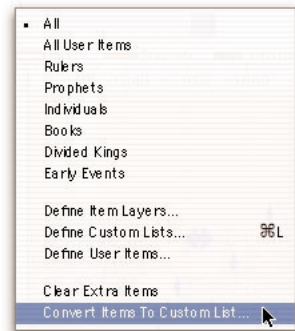
Pressing *command L* (*-L*) re-opens the last Define dialog box used for the front Timeline window. This allows you to view the List you just created and then go back to edit it again.

Lists from extra items

Selecting **Convert Items to Custom List...** from the Item Layer pop-up menu opens the Define Custom Lists dialog box and creates a new list with the extra items currently showing on the Timeline. You can now name and edit this list in the usual ways.

Hint: If you do not see the items on your Custom List even after choosing the List in the current Item Layer, check the Time Range of the layer, and the regions showing in the current Region Layer. If your items are outside these ranges, they will not appear.

Note: You cannot delete a Custom List as long as it is selected in one of the defined Item Layers.



T7

Defining User Items

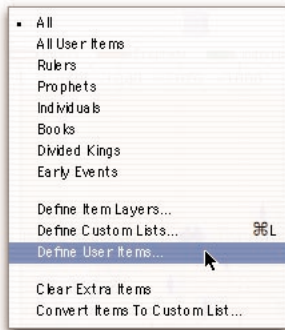
Chapter Contents:

- The Define User Items Dialog Box
- Setting the Item Details
- Creating a New Item
- Displaying User Items on the Timeline
- Deleting Items

T7 Defining User Items

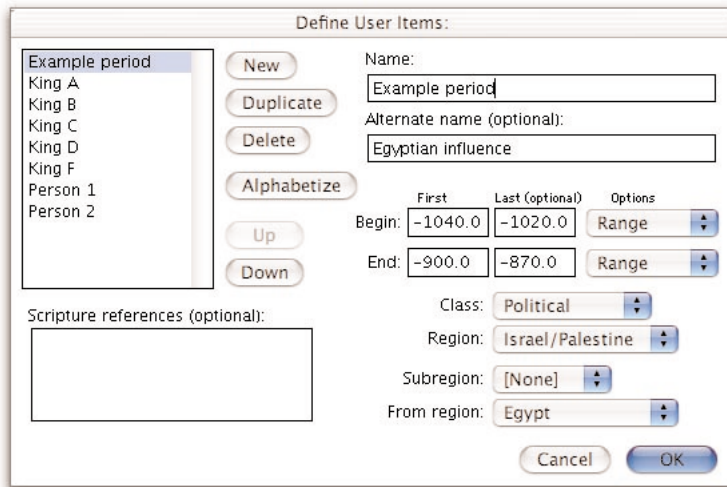
You can create your own database of User Items which can then be included in a Custom List to be displayed in an Item Layer of the Timeline.

The Define User Items Dialog Box



The Timeline comes with few example User Items. This chapter shows you how to create your own items.

Selecting **Define User Items...** from the **Item Layer** pop-up menu, or **Item Layers...** from the **Define Time Layers** submenu (**Options** menu) opens this dialog box:



This dialog box lets you add User Items, define them exactly, and modify existing items.

The scrolling list in the top left corner shows the items which have already been defined and are available for selection in the Define Custom Lists dialog box. Clicking on the name of an item displays its definition in the dialog box.

The **New** button creates a new item and adds [**New name**] to the list and the **Name** text box. The **Duplicate** button makes a copy of the selected item. The **Delete** button removes the item from the list, the **Up** and **Down** buttons move the item name. This lets you rearrange the names on the list. The **Alphabetize** button arranges all the items in alphabetical order.

The name of the item is displayed and can be edited in the top right text box. An optional alternative name, which can be used to amplify to and from the Timeline, may be entered in the **Alternate name** box.

Setting the Item Details

The other options define the details of this User Item.

Scripture references for the item entered in the box on the left, will amplify to the Bible when clicked in the details area. The references are not validated until you click on them. If the verse is not found in an open recyclable Text window, or the default Bible text, a blank Text window appears.

The date boxes The four **Time Range:** boxes let you enter the dates of the item. All the options for standard items *shown in Chapter T2* are available for User Items (except Conservative or Critical dates). The date limits are -3000 to 2000. BC or BCE dates are entered with a minus sign preceding the date.

The first row of text boxes labeled **Begin:** are for the starting dates of the item, and the second row labeled **End:** are for the ending dates. The boxes in the first column under **First** are for the earliest date, and the boxes under **Last** for the latest date for either the beginning or end.

The pop-up menus at the end of each row labeled **Options** let you define the types of uncertainty with the options **Range, Circa, Alternate,** and **Between** for the Begin dates, and **Range, Circa, Alternate,** and **Fixed** for the End dates. These uncertainties appear in the details area and in the Timeline Data window, and affect the display of the marker for the item on the Timeline.

Entering dates

A single date is entered in the First Begin box , e.g. **-450**.

A definite date period is entered in the First Begin and First End boxes, e.g. 450 to 430 BCE.

Slightly uncertain dates are entered in the same way, but modified with **Circa** in the pop-up menus, e.g. **ca. -450 to ca. -430**. If **Circa** is selected, the Last date is ignored.

A range of possible dates for Begin or End is shown by filling both the First and Last boxes and leaving **Range** in the pop-up menu, e.g. **450-445 to 430-428 BC**.

To define alternate dates for an event, enter dates in the First and Last boxes, and select **Alternate** in the pop-up menu, e.g. **450/445 to 430/428 BCE**.

Range, Circa, and **Alternate** can be used independently on the Begin and End dates.

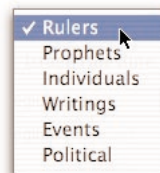
Selecting **Between** for the Begin date implies that the item is of uncertain length and falls anywhere between the First Begin and First End dates. the Last dates and the setting of the End pop-up menu are ignored. The date is displayed as **between -450 and -430**.

T7 Defining User Items

Selecting **Fixed** for the End date means that the duration of the event is certain, but the Begin date is not. The First and Last End dates should show the same interval as the Begin dates, and the date display is followed by the known duration in parentheses, e.g. **450/445 to 430/425 BC (20 years)**.



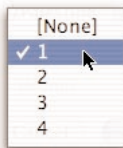
The other pop-up menus allow you to define the class of item, the Region and Subregion in which it appears, and, in the case of a Political period, the region with which it is affiliated.



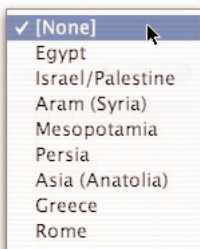
The **Class**: pop-up menu lists the five classes of items used in the item layer, as well as Political so that you can define a new political period.

The **Region**: pop-up menu lets you select the region in which the new item appears.

The Subregions



The **Subregion**: pop-up menu lets you assign the item to a specific horizontal band within the region. You can use up to four subregions, and you may wish to create political periods to identify the subregion. Items assigned to subregion 1 appear at the bottom of the region, and items in the other subregions are grouped in bands above them. Items assigned to no subregion are spread throughout the region band, according to date and class, and may overlap other items which are assigned to subregions.



If you assign an item to a subregion that is not already defined (for example to subregion 3 in a region that has 2 subregions defined) you will get a warning that the appearance of the entire region will be altered. The subregions affect the entire length of the region, although they may not be visible in areas where no items are assigned to them. Each subregion band is of equal width, wide enough to display all the items currently showing in each subregion. Adding another subregion, even with only one item, and even if it is not currently displayed, will add another band of equal width across the entire region.

The **From**: pop-up menu is dimmed unless **Political** is selected in the **Class** pop-up menu. It allows you to select a different region to show that the major influence in this period comes from another region. The period will be colored in that region's color if **Use region colors** is checked in the Define Region Layer dialog box.

Saving changes

Clicking **OK** closes the box and saves all changes you have made. Clicking **Cancel** closes the dialog box without saving any changes.

Returning to the dialog box

Pressing *command L* (*-L*) re-opens the last Define dialog box used for the front Timeline window. This allows you to view the User Items you just created (if All User Items is the list used in the current Item Layer) and then go back to edit them again.

Creating a New Item

Click the **New** button to create a new User Item. [**New name**] is added to the list and the **Name** text box. To remove the new item click **Delete**. Enter a name for the item, and an alternate name if desired. Define the details of the item, then click **New** to add the next item

Use the **Duplicate** button to create another item with the same settings as the selected item, and then change some of the settings. For example, you can create a series of kings in the same region by changing just the name and dates each time you duplicate the item.

Displaying User Items on the Timeline

In order to view your User Items in the Timeline, you can select **All User Items** as the Custom List in an Item Layer. This list automatically displays the political periods and all the current User Items.

You can also create a Custom List displaying User Items, and then select the Custom Layer in an Item Layer. New User Items do not appear on any Custom List (except All User Items) until you add them to the list.

Be sure that the Item Layer includes the classes of items you want to display, and that the Region Layer shows the appropriate regions for those items.

Deleting Items

User Items cannot be deleted if they are currently used in a Custom List. In order to remove the example items supplied with the Timeline, you must first go to the Define Custom Lists dialog box and delete the **Example user items** list (and any other lists you may have added that include these User Items). Then you can delete the items in this dialog box. Note that the Custom List itself cannot be deleted if it is used in a Item Layer.

*T*8

The Timeline Dates

Chapter Contents:

Conservative Versus Critical Dates

Sources

Notes on the Data

Conservative Versus Critical Dates

The *Accordance Bible Timeline* distinguishes two basic systems of dates:

Conservative The **Conservative** system takes the Bible's account of history as essentially reliable and accurate in detail. Chronological statements are therefore usually taken at face value. In cases where chronological difficulties occur, or where the Bible does not seem to agree with other historical sources, the Bible is presumed "innocent until proven guilty," and every effort is made to reconcile such difficulties while maintaining the Bible's historical accuracy.

Critical The **Critical** system takes the Bible's account of history as generally trustworthy, but not necessarily accurate in every detail. In cases where chronological difficulties occur, or where the Bible does not seem to agree with other historical sources, critical historians are sometimes willing to modify or depart from the biblical account.

The Exodus The date of the Exodus is an example of the differences between these two systems:

The conservative date of the Exodus is based primarily on a literal reading of 1 Kings 6:1, which states that the fourth year of Solomon's reign was 480 years after the Exodus. Since the fourth year of Solomon's reign is generally placed at -966, the Exodus is seen as having occurred in -1446.

The critical date of the Exodus is placed around -1250, during the reign of Rameses II. This is based in part on the statement in Exodus 1:11 that the Hebrews built a store city called "Rameses." Accordingly, the chronological statement in 1 Kings 6:1 is either reinterpreted or deemed to be inaccurate.

Other Schemes It should be noted that critical dates for Biblical events can vary widely, and there are numerous dating schemes which might have been used. To a lesser extent, the same can be said for conservative systems of dating. Rather than trying to represent every possible system of chronology, we have chosen to follow specific works which are widely recognized and respected. We understand that some of our users may disagree with particular dates, or that they may subscribe to an entire system of chronology which is different from the ones we have chosen. The ability to create Custom Lists and User Items is intended to address this need.

Sources

The dates for the *Accordance Bible Timeline* are based on the following sources:

Conservative Dates:

Old Testament: Eugene Merrill, *Kingdom of Priests*

Old Testament Writings: Gleason Archer, *Survey of Old Testament Introduction*

Intertestamental Period: *Expositor's Bible Commentary, Between the Testaments* (by Harold Hoehner)

New Testament: Harold Hoehner, *Chronological Aspects of the Life of Christ* Class notes.

Critical Dates:

Old and New Testament Periods: Jack Finegan, *Handbook of Biblical Chronology (Revised Edition)*

Old Testament Prophets and Writings: *HarperCollins Bible Dictionary*
Kümmel: *Introduction to the New Testament*

Other Dates:

The chronology of the Hebrew kings was based on Edwin Thiele, *The Mysterious Numbers of the Hebrew Kings*. This chronology, which is substantially agreed upon by both Merrill and Finegan, was used for both the Conservative and the Critical dates for the period of the Divided Kingdom.

Extrabiblical dates, such as those for Egypt, Rome, and other regions are all based on the *Cambridge Ancient History, 3rd Edition*. Some extrabiblical period names were also derived from relevant articles in the *Anchor Bible Dictionary* (which is available as an *Accordance* module).

The Critical dates for the kings of Aram were derived from Wayne Pitard's article on Aram in the *Anchor Bible Dictionary*.

Conservative dates for this period were derived from Merrill.

Some extrabiblical writings and early church fathers were derived from the *Anchor Bible Dictionary*

Notes on the Data

Types of items The six types of items are: **Rulers, Prophets, Individuals, Writings, Events,** and **Political Periods.**

Rulers include the reigns of kings, judges, pharaohs, and emperors etc.

Prophets include those who wrote prophetic books, and those like Elijah who did not, and display their period of activity.

Individuals show the life span of important people, including rulers.

Writings indicate the probable date of authorship.

Events include all other kinds of noteworthy historical events.

Political periods show historical epochs such as dynasties or empires.

Notes: There is not enough space to include and display the details of many events within the lifetime of a person such as David.

Most Biblical events are assigned to and displayed in the Israel/Palestine region, even when those events actually took place somewhere else, such as the various Egyptian sojourns, exilic events, or Paul's missionary journeys. This convention was adopted to make it easier to see the relationships between Biblical events.

The political periods form a special class of items in the Timeline. They appear as backgrounds so their display is set in the Define Region Layers dialog box. However, in other ways they function like the other classes of items, therefore they do not appear in Custom Lists unless specifically added.

Uncertain dates Dates may have different kinds of uncertainty:

A single date implies a short event in a known year.

A simple range of dates such as **-450 to -430** means a longer item with definite dates.

Circa (abbreviated as ca.) besides a date connotes a small degree of uncertainty as to the exact date. Thus **ca. -450** means about 450 BCE.

A range at one or both ends of the item, such as **-450-440 to -430-425** implies that the item begins anywhere from 450 to 440 BCE and ends anywhere between 430 and 425.

Slashes between dates imply alternatives, so that **-450/440 to -430/425** means that the item begins either in 450 or 440 BCE and ends either in 430 or 425.

Parentheses with a number of years show the known duration of the item even when the beginning and end may be uncertain. Thus **-450-440 to -430-420 (20 years)** means that the item started anywhere from 450 to 440 BCE and lasted for 20 years.

Between followed by a range, such as **between -450 and -430** means that the item falls anywhere in the range and is of uncertain length.

Specific Keyboard Shortcuts for the Timeline

These keystroke commands perform the following actions using the **⌘** key:

Command **F** opens the Find dialog box if a Timeline (or Map) window is in front
otherwise opens the Search All window

Command **L** opens the last used Define dialog box if a Timeline (or Map) window is in front

Command **+** zooms in to the Picture, Map, or Timeline window

Command **-** zooms out of the Picture, Map, or Timeline window

Double- and Triple-click actions

Double-click on a name in Timeline window opens and searches the default English tool

Shift-double-click on a name in Timeline window opens and searches the first tool set

Control-double-click on a name in Timeline opens and searches the last selected English tool

Control-shift-double-click on a name in Timeline opens and searches the last selected tool set

Shift-click in the scrolling lists in the Find and Custom List dialog boxes selects all the items
between the previous and new selection, and

Shift-command-click selects the new item in addition to the previous item(s)

Holding down these keys affects certain other actions:

Shift zoom **In** or **Out** in Timeline window multiplies zoom by 4

Option zoom **Out** in Timeline window zooms out to show most of the Timeline

Drag-select and double-click in selection zooms into the selection

Command drag in Timeline window scrolls the Timeline

Command and **any arrow** key scrolls the window in that direction

Option click in Timeline window measures distances

Option **Copy Name** in the Timeline copies the item details

Index

A

Accordance Help p3
adding items T7-5
amplifying T2-3 to5

B

bibliography T8-3
borders T1-3

C

classes of items T5-3, T8-3
conservative dates T8-2
critical dates T8-2
Custom Lists T6

D

data report T2-4
date display T3-2
dates T1-5, T2-2, T8
default dictionary T3-2
default display T3-2
default layers T3-3
Define Custom List dialog box T6
Define Item Layers dialog box T5
Define Region Layers dialog box T4
Define User Items dialog box T8
details T1-3, T2-2

E

extra names T1-6, T2-5, T6-4

F

Find button T1-6
Find dialog box T1-6 to 7

I

In and **Out** buttons T1-5
Introduction p3
Item Layers T1-4, T5

K

keyboard shortcuts before *Index*

L

label details T4-3, T5-3
legend T1-3

M

measuring T1-7

N

notes on the data T8-3 to 4

P

political labels T4-3
political periods T1-4, T4-3 to 4
pop-up menus T1-2, T1-3 to 5
printing T1-8

R

Region layers T13 to 4, T4
references T1-3, T7-3

S

saving T1-8
Scripture references T1-3, T7-3
selecting T1-8
selecting items for a list T6-3
scrolling T1-5
sources for dates T8-3
subregions T1-3, T7-4

T

Timeline window T1
time range T5-3, T7-3

U

uncertain dates T2-2, T7-3, T8-4
User Items T7